

Southport Elementary School Window & Door Replacement

ADDENDUM 002
11/08/2022
7201-218690



Brunswick County Schools



101 NORTH THIRD STREET SUITE 600
WILMINGTON, NORTH CAROLINA 28401
TEL. 910.790.9901 FAX 910.790.3111
WWW.LS3P.COM

701 W. 9th Street Southport, NC
28461

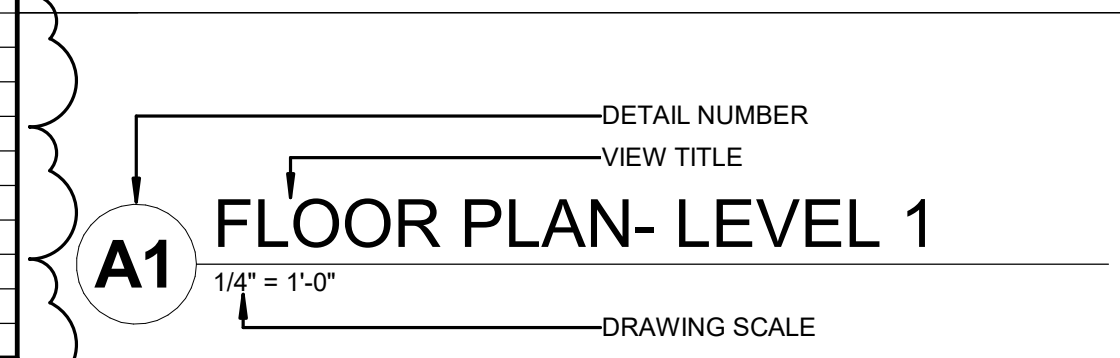
PROJECT ABBREVIATIONS

A/C	AIR CONDITIONING	INT	INTERIOR	TRTD	TREATED
ADMIN	ADMINISTRATION	JAN CLO	JANITOR CLOSET	TV	TELEVISION
AFF	ABOVE FINISHED FLOOR	KIT	KITCHEN	TYP	TYPICAL
ALT	ALTERNATE	KO	KNOCKOUT	UL	UNDERWRITERS LABORATORIES
ALUM	ALUMINUM	LAB	LABORATORY	UNO	UNLESS NOTED OTHERWISE
APPROX	APPROXIMATE(LY)	LAM	LAMINATE	VERT	VERTICAL
ARCH	ARCHITECT(URAL)	LAU	LAUNDRY	VEST	VESTIBULE
AUTO	AUTOMATIC	LAV	LAVATORY	VIF	VERIFY IN FIELD
AUX	AUXILIARY	LF	LINEAR FEET	W	WEST, WIDE
AV	AUDIOVISUAL	LVR	LOUVER	W	WITH
BTUMINOUS	BITUMINOUS	MANT	MAINTENANCE	W/O	WITHOUT
BL	BUILDING LINE	MATL	MATERIAL	WW	WALL TO WALL
BLDG	BUILDING	MAX	MAXIMUM	WC	WATER CLOSET
BN	BULL NOSE	MECH	MECHANICAL	WD	WOOD
BOS	BOTTOM OF STEEL	MEZZ	MEZZANINE	WP	WORKING POINT, WATERPROOFING
BOT	BOTTOM	MFG	MANUFACTURING	WR	WATER REPELLENT
CAB	CABINET	MFR	MANUFACTURER	WT	WEIGHT
CJ	CONTROL JOINT	MIN	MINIMUM	WWF	WELDED WIRE FABRIC
CL	CENTER LINE	MISC	MISCELLANEOUS	YD	YARD
CLG	CEILING	MO	MASONRY OPENING		
CLG HT	CEILING HEIGHT	MR	MOISTURE RESISTANT		
CLO	CLOSET	MTD	MOUNTED		
CLR	CLEAR(ANCE)	MTG	MOUNTING		
CMU	CONCRETE MASONRY UNIT	MTL	METAL		
COL	COLUMN	N	NORTH		
CONC	CONCRETE	NIC	NOT IN CONTRACT		
CONF	CONFERENCE	NOM	NOMINAL		
CONT	CONTINUE, CONTINUOUS	NON	NON-COMBUSTIBLE		
CORR	CORRIDOR	COMB	COMB		
CU FT	CUBIC FOOT	NTS	NOT TO SCALE		
CU YD	CUBIC YARD	OC	ON CENTER		
DEMO	DEMOLISH	OD	OUTSIDE DIAMETER		
DEPT	DEPARTMENT	OPP	OPPOSITE		
DET	DETAIL	OPT	OPTION(AL)		
DF	DRINKING FOUNTAIN	PCF	POUNDS PER CUBIC FEET		
DIA	DIAMETER	PLAM	PLASTIC LAMINATE		
DIAG	DIAGONAL	PLF	POUNDS PER LINEAR FEET		
DIM	DIMENSION	PLYWD	PLYWOOD		
DIV	DIVISION	PNL	PANEL		
DS	DOWNSPOUT	PR	PAIR		
E	EAST	PREFAB	PREFABRICATED		
EA	EACH	PREFIN	PREFINISH		
EIFS	EXTERIOR INSULATION & FINISH SYSTEM	PRKG	PARKING		
EJ	EXPANSION JOINT	PSF	POUNDS PER SQUARE FOOT		
EL	ELEVATION	PSI	POUNDS PER SQUARE INCH		
ELEC	ELECTRICAL	PT	PAINT, POST-TENSIONED, PRE-TREATED		
ELEV	ELEVATOR	PVC	POLYVINYL CHLORIDE (PLASTIC)		
ENCL	ENCLOSE(D)	QTR	QUARTER		
EOS	EDGE OF SLAB	QTY	QUANTITY		
EQ	EQUAL	R	RADIUS, RISER		
EQUIP	EQUIPMENT	RCP	REFLECTED CEILING PLAN		
EWG	ELECTRIC WATER COOLER	RD	ROOF DRAIN		
EXIST	EXISTING	REF	REFRIGERATOR, REFERENCE		
EXP JT	EXPANSION JOINT	REQD	REQUIRED		
EXT	EXTERIOR	RL	ROOF LEADER		
F/F	FACE TO FACE	RM	ROOM		
FD	FLOOR DRAIN	RO	ROUGH OPENING		
FE	FIRE EXTINGUISHER	ROW	RIGHT OF WAY		
FEC	FIRE EXTINGUISHER CABINET	S	SOUTH		
FF EL	FINISH FLOOR ELEVATION	SC	SOLID CORE		
FHC	FIRE HOSE CABINET	SD	STORM DRAIN		
FIN FLR	FINISHED FLOOR	SECT	SECTION		
FLR	FLOOR, FILLER	SF	SQUARE FEET		
FOC	FACE OF CURB	SIM	SIMILAR		
FOF	FACE OF FINISH	SPEC	SPECIFICATION		
FOM	FACE OF MASONRY	SPKR	SPEAKER		
FOS	FACE OF SLAB	SQ	SQUARE		
FOW	FACE OF WALL	SS	STAINLESS STEEL		
FT	FOOT, FEET	STD	STANDARD		
FTG	FOOTING	STOR	STORAGE		
FURN	FURNISH, FURNITURE	SUSP	SUSPENDED		
GAGE	GAGE	SYS	SYSTEM		
GALV	GALVANIZED	T	TREAD		
GC	GENERAL CONTRACTOR	TEL	TELEPHONE		
GYP BD	GYP SUM BOARD	TEMP	TEMPORARY		
GYP PLAS	GYP SUM PLASTER	TFF	TOP OF FINISH FLOOR		
HC	HANDICAP	THK	THICKNESS		
HD	HEAVY DUTY	THRU	THROUGH		
HDWD	HARDWOOD	TO	TOP OF		
HDWR	HARDWARE	TOB	TOP OF BEAM		
HM	HOLLOW METAL	TOC	TOP OF CONCRETE, CURB		
HORIZ	HORIZONTAL	TOF	TOP OF FOOTING		
HT	HEIGHT	TOJ	TOP OF JOIST		
HVAC	HEATING, VENTILATION & AIR CONDITIONING	TOM	TOP OF MASONRY		
ID	INSIDE DIAMETER	TOP	TOP OF PARAPET		
INCL	INCLUDE(D), (ING)	TOS	TOP OF SLAB		
INFO	INFORMATION	TOW	TOP OF WALL		
INSUL	INSULATION				

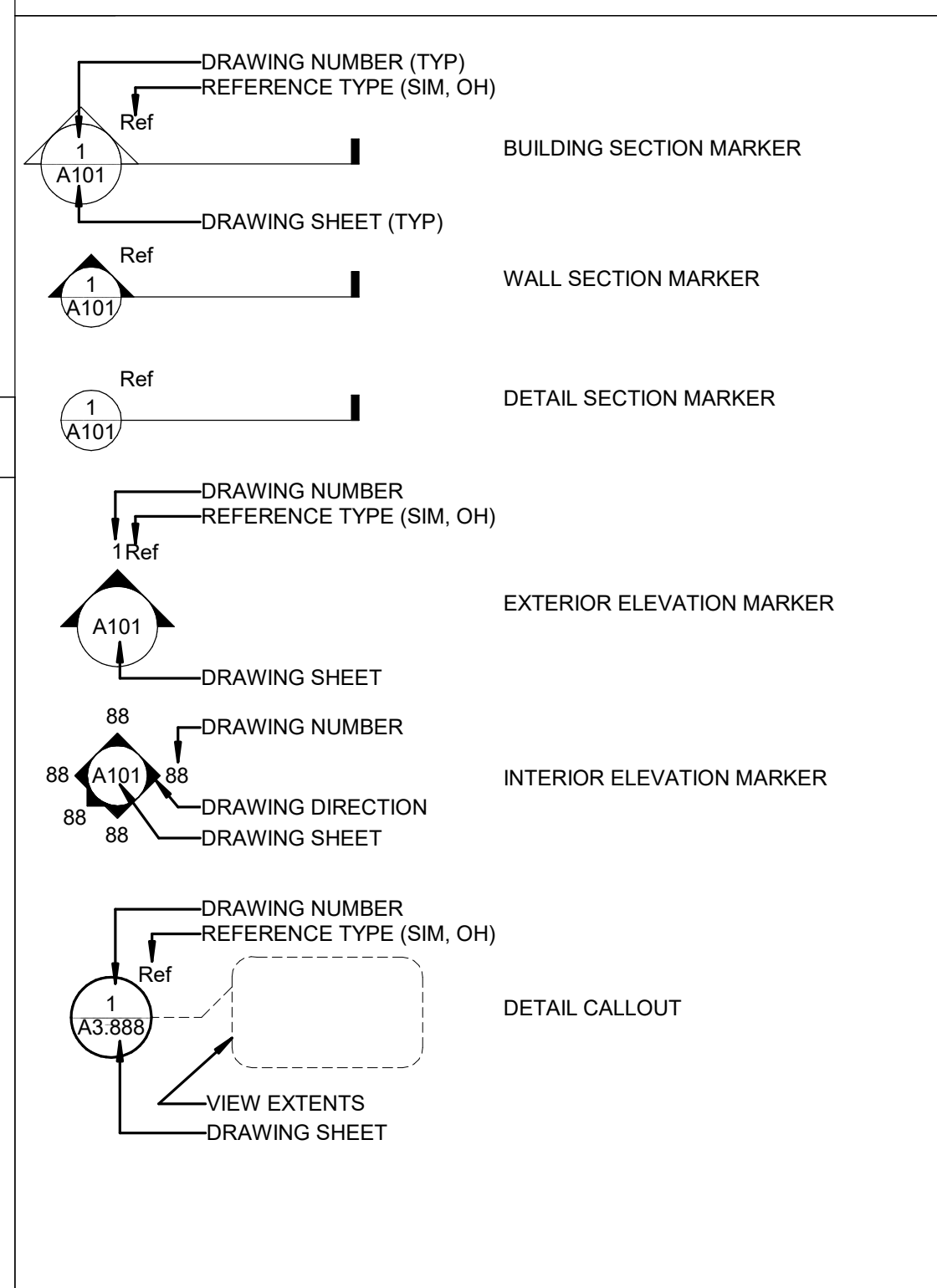
SHEET INDEX

NUMBER	NAME	ORIG	ISSUE	REV#	DATE
G-000	COVER SHEET				
G-001	APPENDIX B & LIFE SAFETY	10/24/22	B		11/08/2022
A-101	FLOOR PLAN-LEVEL 01 (WINDOWS)	10/24/22	A		10/24/2022
A-102	FLOOR PLAN-LEVEL 1 (DOORS)	10/24/22	B		11/08/2022
A-103	DOOR SCHEDULE & DETAILS	10/24/22	B		11/08/2022
A-104	WINDOW HEAD, JAMB & SILL DETAILS	10/24/22	B		11/08/2022
A-105	EXISTING DOOR PHOTOS	11/03/22	A		11/08/2022
A-106	EXISTING DOOR & WINDOW TYPE PHOTOS	11/03/22	A		11/08/2022

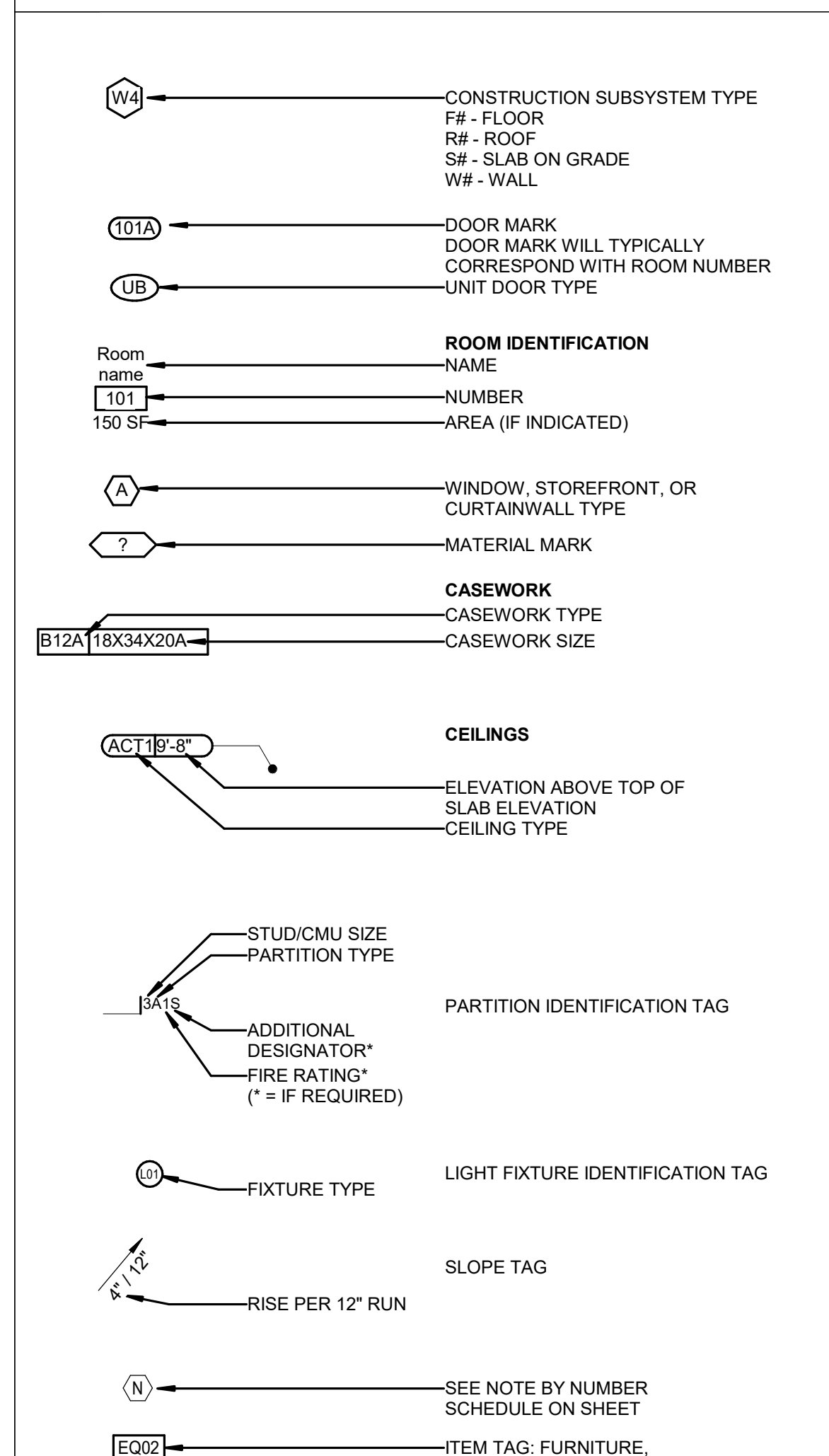
DRAWING TITLES



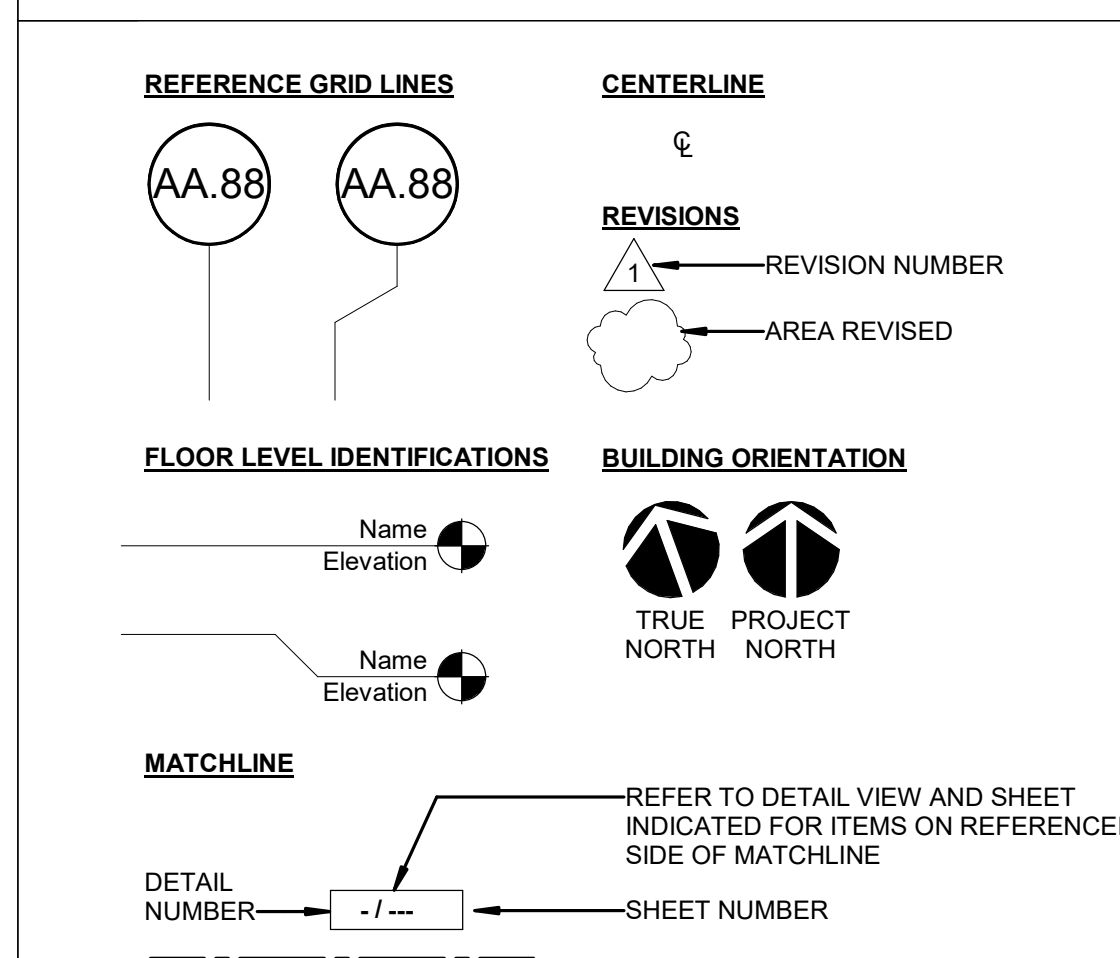
VIEW MARKERS



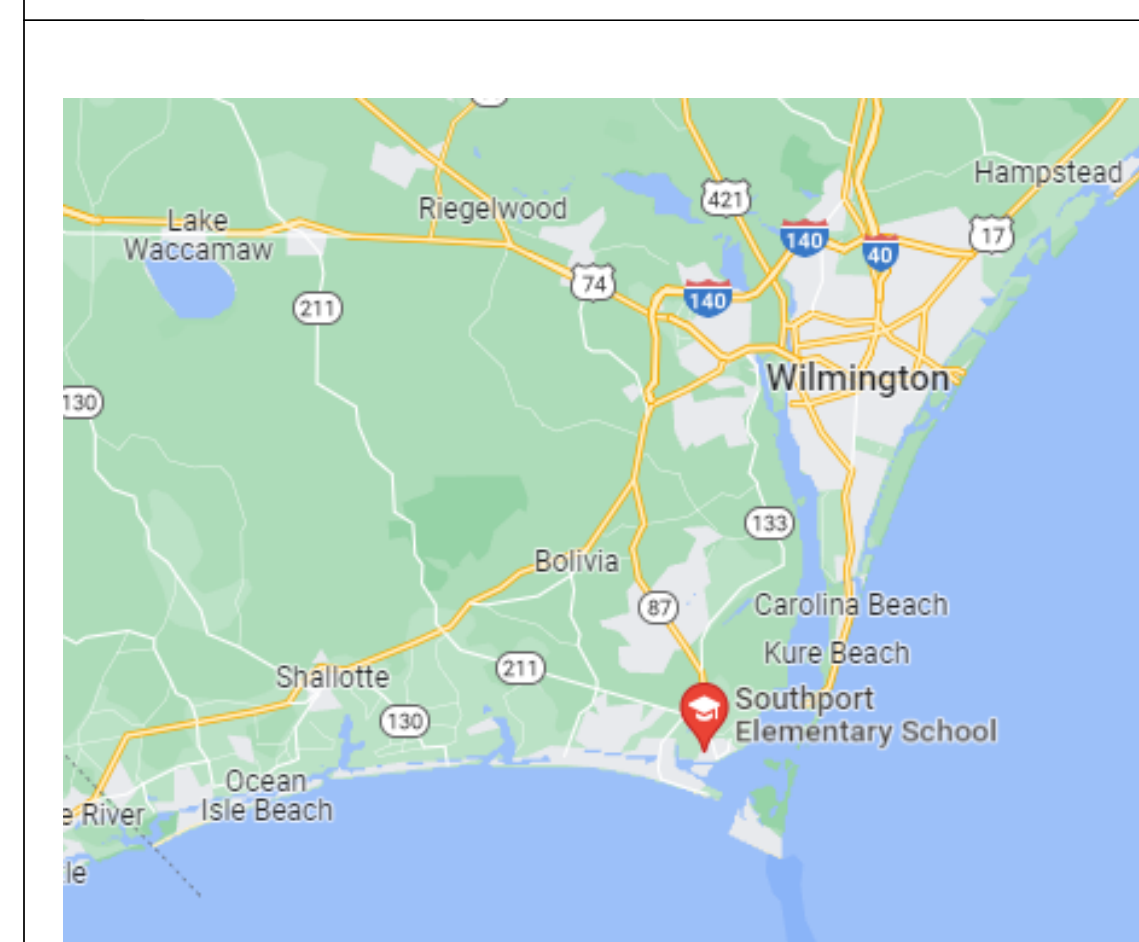
ITEM TAGS



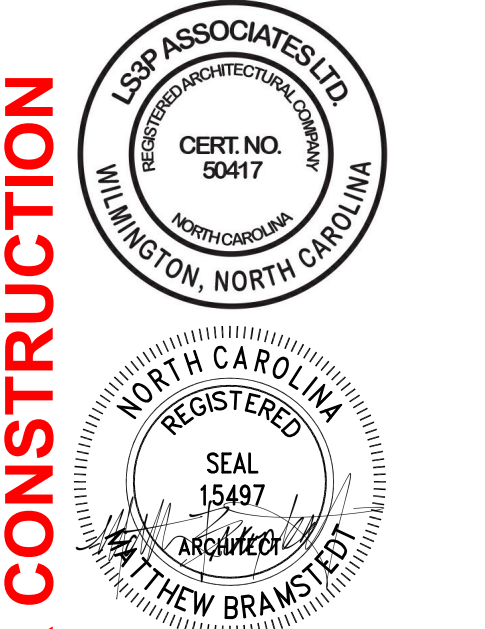
DRAWING SYMBOLS



VICINITY MAP



AREA MAP



COPYRIGHT 2021 ALL RIGHTS RESERVED. PRINTED OR ELECTRONIC DRAWINGS AND DOCUMENTATION MAY NOT BE REPRODUCED IN ANY FORM WITHOUT WRITTEN PERMISSION FROM LS3P ASSOCIATES LTD.

Southport Elementary School Window & Door Replacement
701 W. 9th Street Southport, NC 28461
LS3P PROJECT: 7201-218690

DATE	DESCRIPTION
A 10/24/2022	BID DOCUMENTS
B 11/08/2022	ADDENDUM 002

SHEET NAME:
COVER SHEET

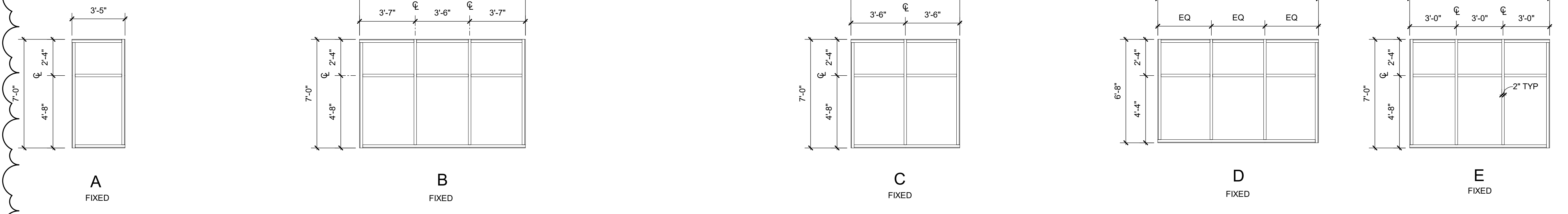
ORIG SUBMISSION: 10/24/22

SHEET:
G-000

11/17/2022 2:12:25 PM

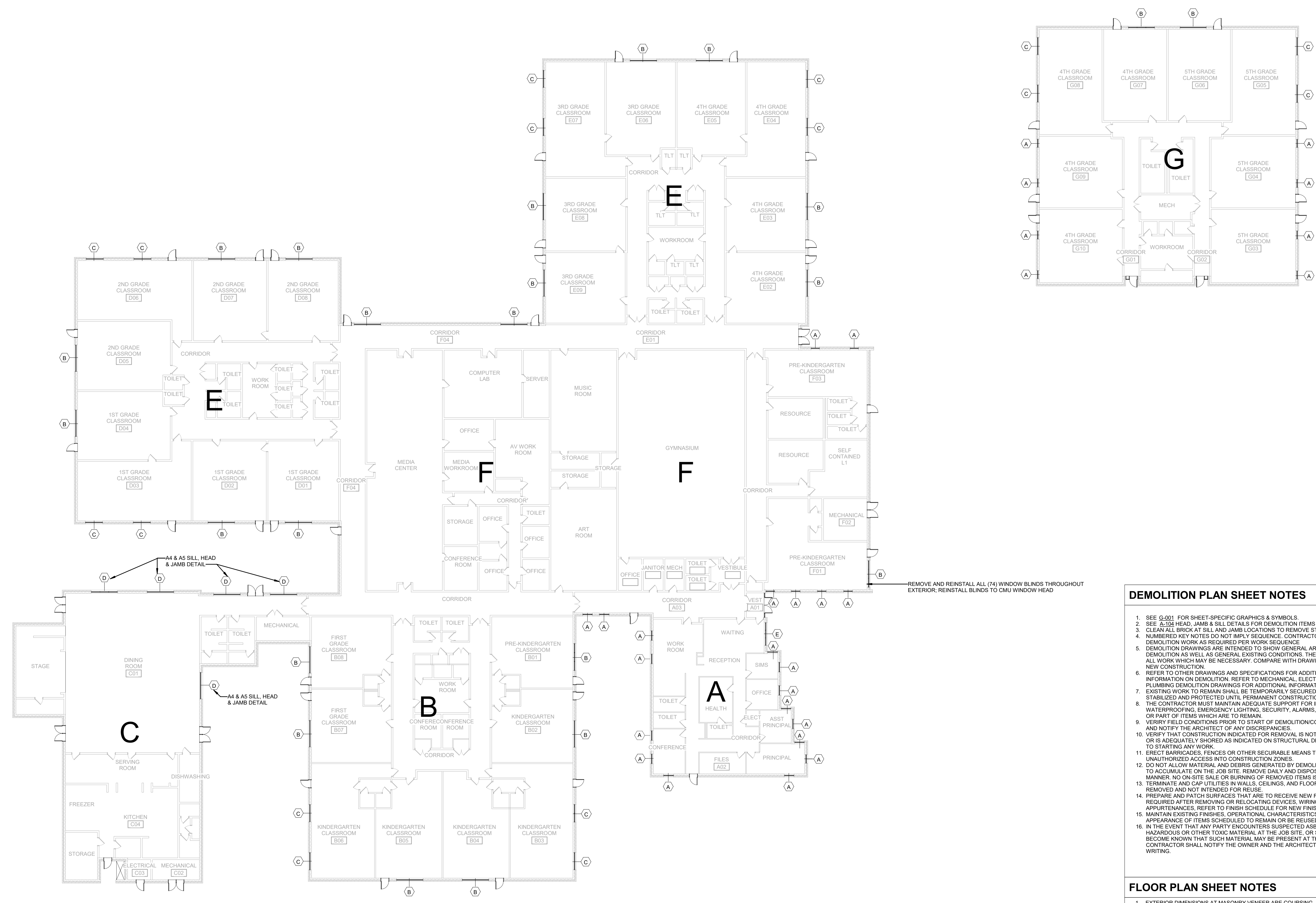
VERIFY ALL DIMENSIONS IN FIELD

ULTIMATE DESIGN WIND SPEED = 130 MPH

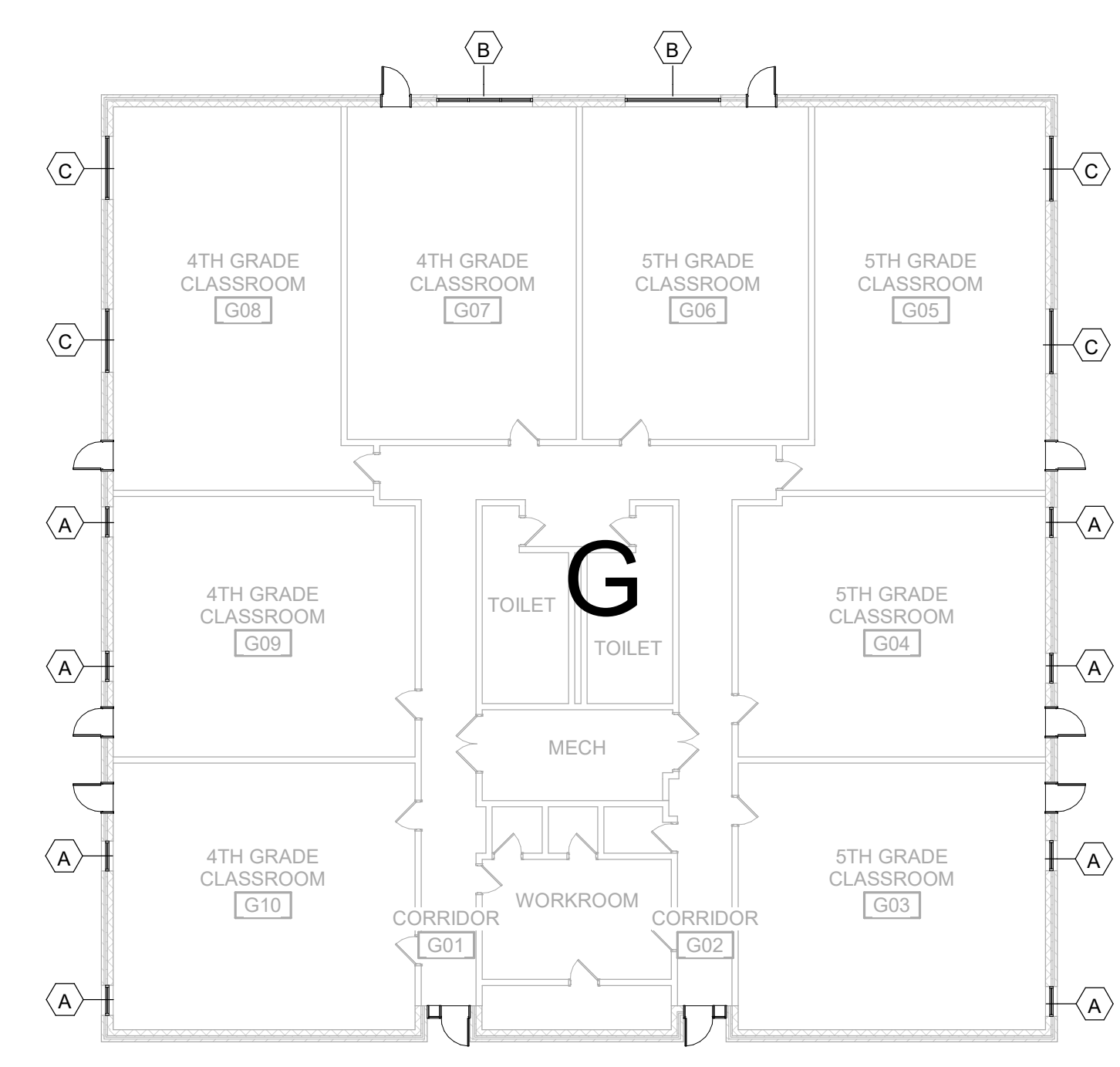


NOTE: ALL EXISTING EXTERIOR WINDOWS, DOORS, AND FRAMES TO BE REMOVED U.N.O.
VERIFY ALL DIMENSIONS IN FIELD

WINDOW SCHEDULE			
TYPE	HEIGHT	WIDTH	COMMENTS
A	7'-0"	3'-5"	FIXED UNIT
B	7'-0"	10'-8"	FIXED UNIT
C	7'-0"	7'-0"	FIXED UNIT
D	7'-0"	10'-4"	FIXED UNIT
E	7'-0"	9'-0"	FIXED UNIT



REMOVE AND REINSTALL ALL (74) WINDOW BLINDS THROUGHOUT EXTERIOR. REINSTALL BLINDS TO CMU WINDOW HEAD



DEMOLITION PLAN SHEET NOTES

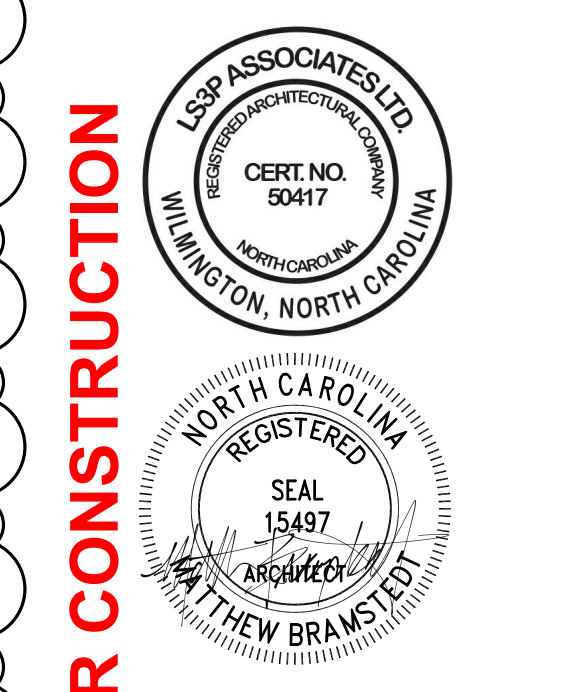
- SEE G-001 FOR SHEET-SPECIFIC GRAPHICS & SYMBOLS.
- SEE A-104 HEAD, JAMB & SILL DETAILS FOR DEMOLITION ITEMS
- CLEAN ALL BRICK AT SILL AND JAMB LOCATIONS TO REMOVE STAINING
- NUMBERED KEY NOTES DO NOT IMPLY SEQUENCE. CONTRACTOR TO PERFORM DEMOLITION WORK AS REQUIRED PER WORK SEQUENCE
- DEMOLITION DRAWINGS ARE INTENDED TO SHOW GENERAL AREAS OF DEMOLITION AS WELL AS GENERAL EXISTING CONDITIONS. THEY DO NOT SHOW ALL WORK WHICH MAY BE NECESSARY. COMPARE WITH DRAWINGS INDICATING NEW CONSTRUCTION.
- REFER TO OTHER DRAWINGS AND SPECIFICATIONS FOR ADDITIONAL INFORMATION ON DEMOLITION. REFER TO MECHANICAL, ELECTRICAL, AND PLUMBING DEMOLITION DRAWINGS FOR ADDITIONAL INFORMATION.
- EXISTING WORK TO REMAIN SHALL BE TEMPORARILY SECURED, BRACED, STABILIZED AND PROTECTED UNTIL PERMANENT CONSTRUCTION IS IN PLACE.
- THE CONTRACTOR MUST MAINTAIN ADEQUATE SUPPORT FOR INSULATION, WATERPROOFING, EMERGENCY LIGHTING, SECURITY, ALARMS, ETC. FOR ALL OR PART OF ITEMS WHICH ARE TO REMAIN.
- VERIFY FIELD CONDITIONS PRIOR TO START OF DEMOLITION/CONSTRUCTION AND NOTIFY THE ARCHITECT OF ANY DISCREPANCIES.
- VERIFY THAT CONSTRUCTION INDICATED FOR REMOVAL IS NOT LOAD BEARING OR IS ADEQUATELY SHORED AS INDICATED ON STRUCTURAL DRAWINGS PRIOR TO STARTING ANY WORK.
- ERECT BARRICADES, FENCES OR OTHER SECURABLE MEANS TO PREVENT UNAUTHORIZED ACCESS INTO CONSTRUCTION ZONES.
- DO NOT ALLOW MATERIAL AND DEBRIS GENERATED BY DEMOLITION ACTIVITIES TO ACCUMULATE ON THE JOB SITE. REMOVE DAILY AND DISPOSE OF IN A LEGAL MANNER. NO ON-SITE SALE OR BURNING OF REMOVED ITEMS IS PERMITTED.
- TERMINATE AND CAP UTILITIES IN WALLS, CEILINGS, AND FLOORS, NOTED TO BE REMOVED AND NOT INTENDED FOR REUSE.
- PREPARE AND PATCH SURFACES THAT ARE TO RECEIVE NEW FINISHES REQUIRED AFTER REMOVING OR RELUCATING DEVICES, WIRING OR OTHER APPURTENANCES, REFER TO FINISH SCHEDULE FOR NEW FINISHES.
- MAINTAIN EXISTING FINISHES, OPERATIONAL CHARACTERISTICS, AND APPEARANCE OF ITEMS SCHEDULED TO REMAIN OR BE REUSED.
- IN THE EVENT THAT ANY PARTY ENCOUNTERS SUSPECTED ASBESTOS, HAZARDOUS OR OTHER TOXIC MATERIAL AT THE JOB SITE, OR SHOULD IT BECOME KNOWN THAT SUCH MATERIAL MAY BE PRESENT AT THE JOB SITE, CONTRACTOR SHALL NOTIFY THE OWNER AND THE ARCHITECT IMMEDIATELY IN WRITING.

FLOOR PLAN SHEET NOTES

- EXTERIOR DIMENSIONS AT MASONRY VENEER ARE COURSING, NOT ACTUAL AND ARE TO FACE OF MASONRY.
- INTERIOR DIMENSIONS INDICATED ARE TO FACE OF STUD, FACE OF MASONRY AND CENTERLINES OF COLUMNS, UNDO.
- LOCATE DOOR OPENINGS 4" FROM NEAREST PERPENDICULAR WALL.
- WHERE PARTITIONS OF DIFFERENT FIRE RATINGS INTERSECT, THE HIGHEST RATED PARTITION SHALL CONTINUE THROUGH, MAINTAIN PARTITION FIRE RATING BEHIND RECESSED FIRE EXTINGUISHER CABINETS.
- RATED WALLS INTERSECTING EXTERIOR WALLS SHALL EXTEND TO THE INSIDE FACE OF EXTERIOR SHEATHING.
- INSTALL BLOCKING IN PARTITIONS FOR CASEWORK, WALL MOUNTED EQUIPMENT, TRIM, AND RELATED CONSTRUCTION.
- SEE LIFE SAFETY PLANS FOR LOCATIONS OF FIRE RATED AND SMOKE WALLS
- SEE SHEET G-001 FOR CONSTRUCTION SUBSYSTEMS (OR PARTITION SCHEDULE)



LS3P
101 NORTH THIRD STREET, SUITE 500
WILMINGTON, NORTH CAROLINA 28401
TEL. 910.790.9901 FAX. 910.790.3111
WWW.LS3P.COM



FOR CONSTRUCTION

COPYRIGHT 2022 ALL RIGHTS RESERVED. PRINTED OR ELECTRONIC DRAWINGS AND DOCUMENTATION MAY NOT BE REPRODUCED IN ANY FORM WITHOUT WRITTEN PERMISSION FROM LS3P ASSOCIATES LTD.

Southport Elementary School Window & Door Replacement
701 W. 9th Street Southport, NC 28461
LSP PROJECT: 7201-21890

DATE	DESCRIPTION
A 10/24/2022	BID DOCUMENTS
B 11/08/2022	ADDENDUM 002

SHEET NAME:
FLOOR PLAN - LEVEL 01 (WINDOWS)

ORIG SUBMISSION: 10/24/22

SHEET:
A-101

BID DOCUMENTS

A1 FLOOR PLAN - LEVEL 01 (WINDOWS)
1/16" = 1'-0"

THE LINE SHOWN ABOVE IS EXACTLY ONE FOOT FROM THE INTERIOR FINISH SURFACE

E

D

C

B

A

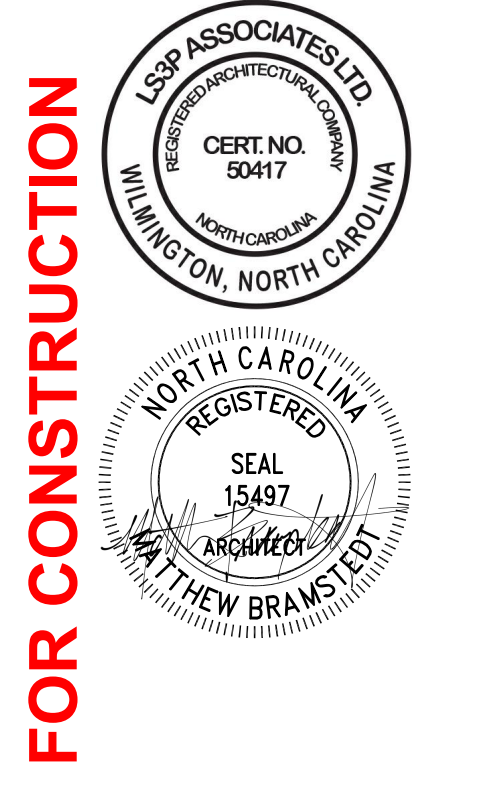
NOTE: ALL EXISTING EXTERIOR WINDOWS, DOORS, AND FRAMES TO BE REMOVED U.N.O.



Brunswick County Schools

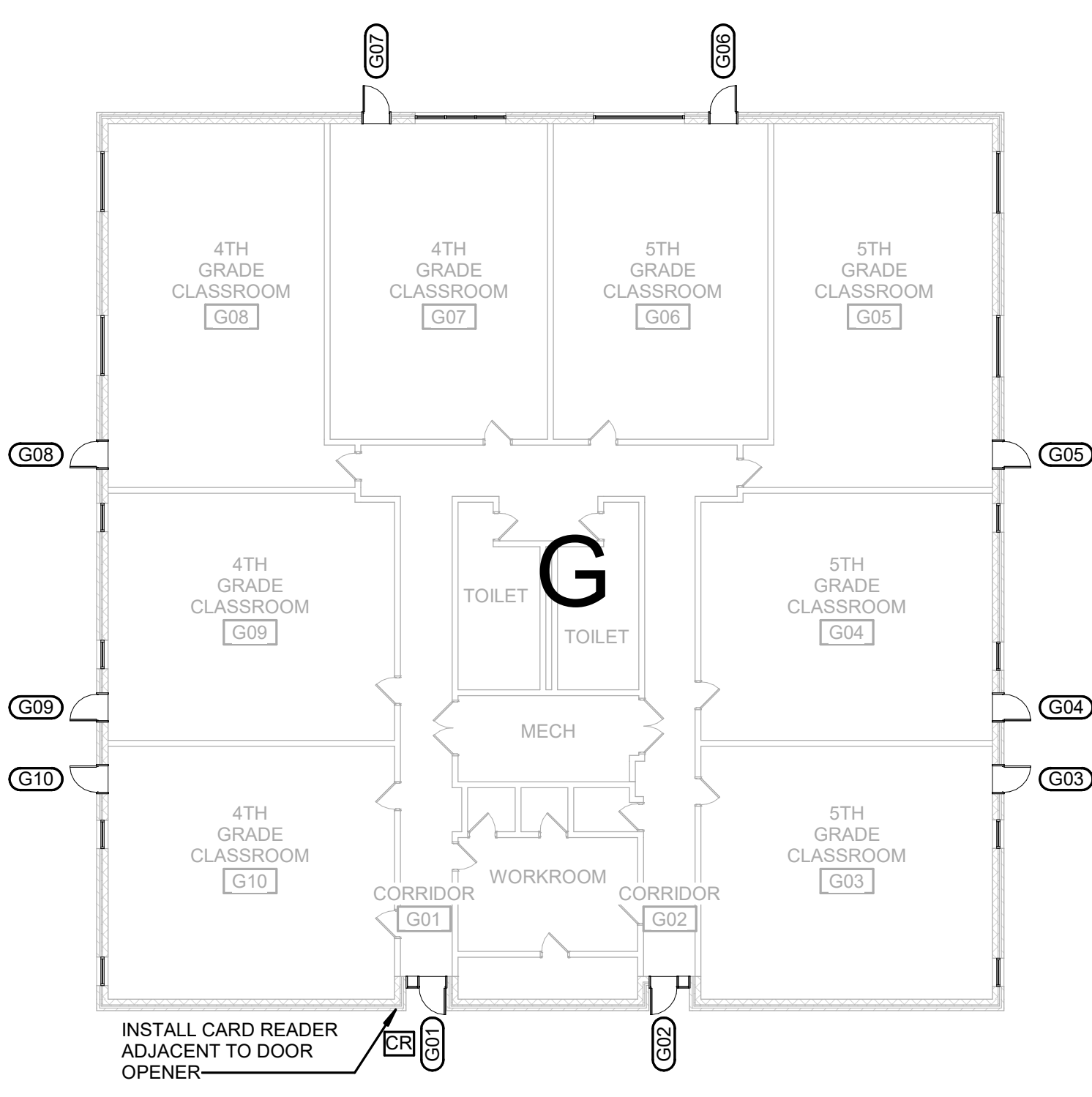
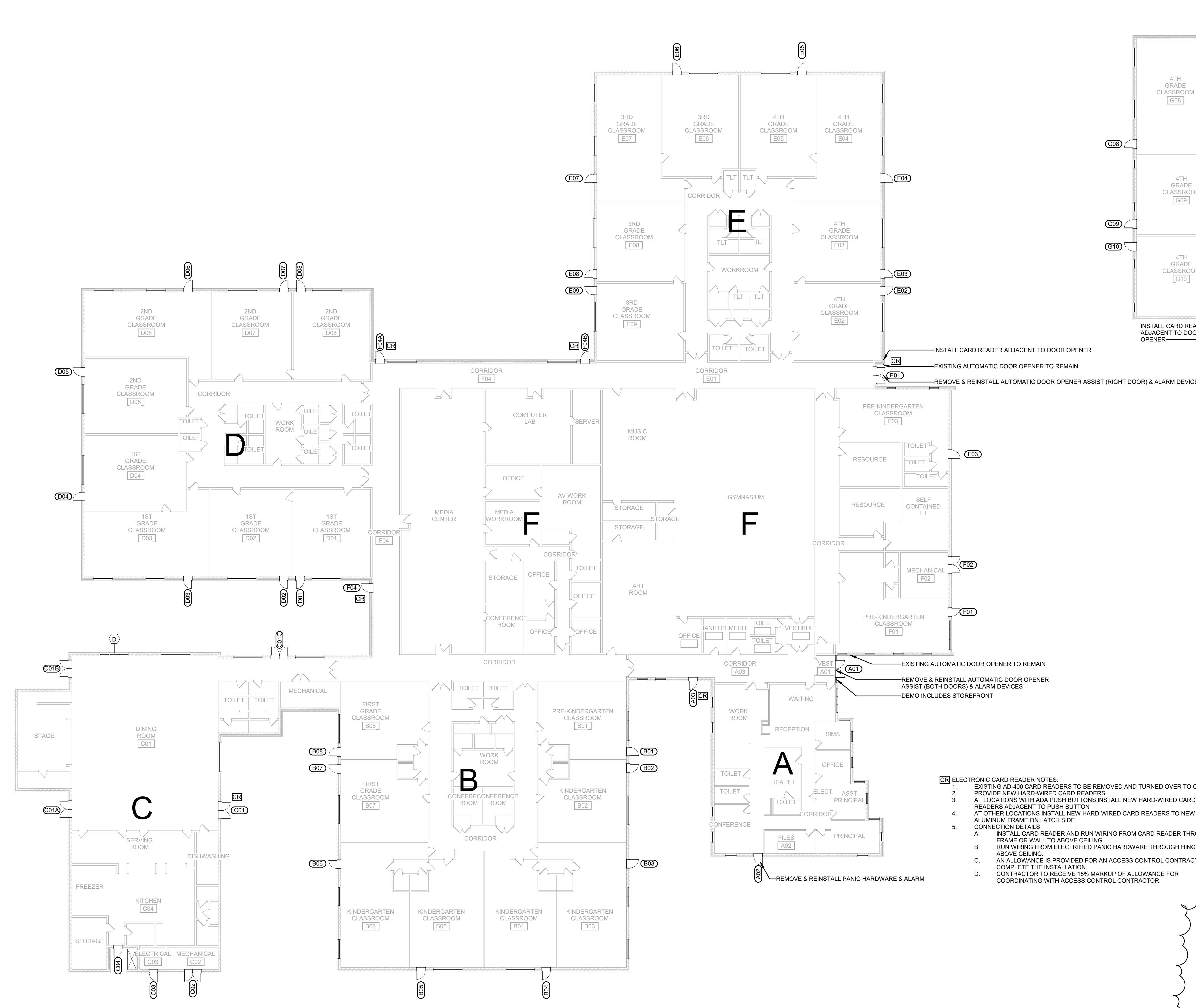


101 NORTH THIRD STREET, SUITE 500
WILMINGTON, NORTH CAROLINA 28401
TEL. 910.790.9901 FAX. 910.790.3111
WWW.LS3P.COM



FOR CONSTRUCTION

Southport Elementary School Window & Door Replacement
701 W. 9th Street Southport, NC 28461
LSP PROJECT: 7201-218900



DEMOLITION PLAN SHEET NOTES

- 1. SEE G-001 FOR SHEET-SPECIFIC GRAPHICS & SYMBOLS.
2. SEE A-108 HEAD, JAMB & SILL DETAILS FOR DEMOLITION ITEMS
3. CLEAN ALL BRICK AT SILL AND JAMB LOCATIONS TO REMOVE STAINING
4. NUMBERED KEY NOTES DO NOT IMPLY SEQUENCE. CONTRACTOR TO PERFORM DEMOLITION WORK AS REQUIRED PER WORK SEQUENCE
5. DEMOLITION DRAWINGS ARE INTENDED TO SHOW GENERAL AREAS OF DEMOLITION AS WELL AS GENERAL EXISTING CONDITIONS. THEY DO NOT SHOW ALL WORK WHICH MAY BE NECESSARY. COMPARE WITH DRAWINGS INDICATING NEW CONSTRUCTION.
6. REFER TO OTHER DRAWINGS AND SPECIFICATIONS FOR ADDITIONAL INFORMATION ON DEMOLITION. REFER TO MECHANICAL, ELECTRICAL, AND PLUMBING DEMOLITION DRAWINGS FOR ADDITIONAL INFORMATION.
7. EXISTING WORK TO REMAIN SHALL BE TEMPORARILY SECURED, BRACED, STABILIZED AND PROTECTED UNTIL PERMANENT CONSTRUCTION IS IN PLACE.
8. THE CONTRACTOR MUST MAINTAIN ADEQUATE SUPPORT FOR INSULATION, WATERPROOFING, EMERGENCY LIGHTING, SECURITY, ALARMS, ETC. FOR ALL OR PART OF ITEMS WHICH ARE TO REMAIN.
9. VERIFY FIELD CONDITIONS PRIOR TO START OF DEMOLITION/CONSTRUCTION AND NOTIFY THE ARCHITECT OF ANY DISCREPANCIES.
10. VERIFY THAT CONSTRUCTION INDICATED FOR REMOVAL IS NOT LOAD BEARING OR IS ADEQUATELY SHORED AS INDICATED ON STRUCTURAL DRAWINGS PRIOR TO STARTING ANY WORK.
11. ERECT BARRICADES, FENCES OR OTHER SECURABLE MEANS TO PREVENT UNAUTHORIZED ACCESS INTO CONSTRUCTION ZONES.
12. DO NOT ALLOW MATERIAL AND DEBRIS GENERATED BY DEMOLITION ACTIVITIES TO ACCUMULATE ON THE JOB SITE. REMOVE DAILY AND DISPOSE OF IN A LEGAL MANNER. NO ON-SITE SALE OR BURNING OF REMOVED ITEMS IS PERMITTED.
13. TERMINATE AND CAP UTILITIES IN WALLS, CEILINGS, AND FLOORS, NOTED TO BE REMOVED AND NOT INTENDED FOR REUSE.
14. PREPARE AND PATCH SURFACES THAT ARE TO RECEIVE NEW FINISHES REQUIRED AFTER REMOVING OR RELOCATING DEVICES, WIRING OR OTHER APURTENANCES. REFER TO FINISH SCHEDULE FOR NEW FINISHES.
15. MAINTAIN EXISTING FINISHES, OPERATIONAL CHARACTERISTICS, AND APPEARANCE OF ITEMS SCHEDULED TO REMAIN OR BE REUSED.
16. IN THE EVENT THAT ANY PARTY ENCOUNTERS SUSPECTED ASBESTOS, HAZARDOUS OR OTHER TOXIC MATERIAL AT THE JOB SITE, OR SHOULD IT BECOME KNOWN THAT SUCH MATERIAL MAY BE PRESENT AT THE JOB SITE, THE CONTRACTOR SHALL NOTIFY THE OWNER AND THE ARCHITECT IMMEDIATELY IN WRITING.
17. CONTRACTOR TO ALLOW OWNER TO INSPECT AND TAKE OWNERSHIP OF ANY DEMOED HARDWARE OR FRP DOORS.
18. CONTRACTOR TO LABEL, STORE, AND REINSTALL SCHLAGE CORES AT SAME LOCATION WHERE ENCOUNTERED.

FLOOR PLAN SHEET NOTES

- 1. EXTERIOR DIMENSIONS AT MASONRY VENEER ARE COURSING, NOT ACTUAL AND ARE TO FACE OF MASONRY.
2. INTERIOR DIMENSIONS INDICATED ARE TO FACE OF STUD, FACE OF MASONRY AND CENTERLINES OF COLUMNS, UNO.
3. LOCATE DOOR OPENINGS 4" FROM NEAREST PERPENDICULAR WALL.
4. WHERE PARTITIONS OF DIFFERENT FIRE RATINGS INTERSECT, THE HIGHEST RATED PARTITION SHALL CONTINUE THROUGH. MAINTAIN PARTITION FIRE RATING BEHIND RECESSED FIRE EXTINGUISHER CABINETS.
5. RATED WALLS INTERSECTING EXTERIOR WALLS SHALL EXTEND TO THE INSIDE FACE OF EXTERIOR SHEATHING.
6. INSTALL BLOCKING IN PARTITIONS FOR CASEWORK, WALL MOUNTED EQUIPMENT, TRIM, AND RELATED CONSTRUCTION.
7. SEE LIFE SAFETY PLANS FOR LOCATIONS OF FIRE RATED AND SMOKE WALLS.
8. SEE SHEET G-001 FOR CONSTRUCTION SUBSYSTEMS (OR PARTITION SCHEDULE).

- CR ELECTRONIC CARD READER NOTES:
1. EXISTING AD-400 CARD READERS TO BE REMOVED AND TURNED OVER TO OWNER
2. PROVIDE NEW HARD-WIRED CARD READERS
3. AT LOCATIONS WITH ADA PUSH BUTTONS INSTALL NEW HARD-WIRED CARD READERS ADJACENT TO PUSH BUTTON
4. AT OTHER LOCATIONS INSTALL NEW HARD-WIRED CARD READERS TO NEW ALUMINUM FRAME ON LATCH SIDE.
5. CONNECTION DETAILS
A. INSTALL CARD READER AND RUN WIRING FROM CARD READER THROUGH FRAME OR WALL TO ABOVE CEILING.
B. RUN WIRING FROM ELECTRIFIED PANIC HARDWARE THROUGH HINGE TO ABOVE CEILING.
C. AN ALLOWANCE IS PROVIDED FOR AN ACCESS CONTROL CONTRACTOR TO COMPLETE THE INSTALLATION.
D. CONTRACTOR TO RECEIVE 1% MARKUP OF ALLOWANCE FOR COORDINATING WITH ACCESS CONTROL CONTRACTOR.

A1 FLOOR PLAN - LEVEL 1 DOORS

1/16" = 1'-0"

SHEET NAME: FLOOR PLAN - LEVEL 1 (DOORS)

ORIG SUBMISSION: 10/24/22

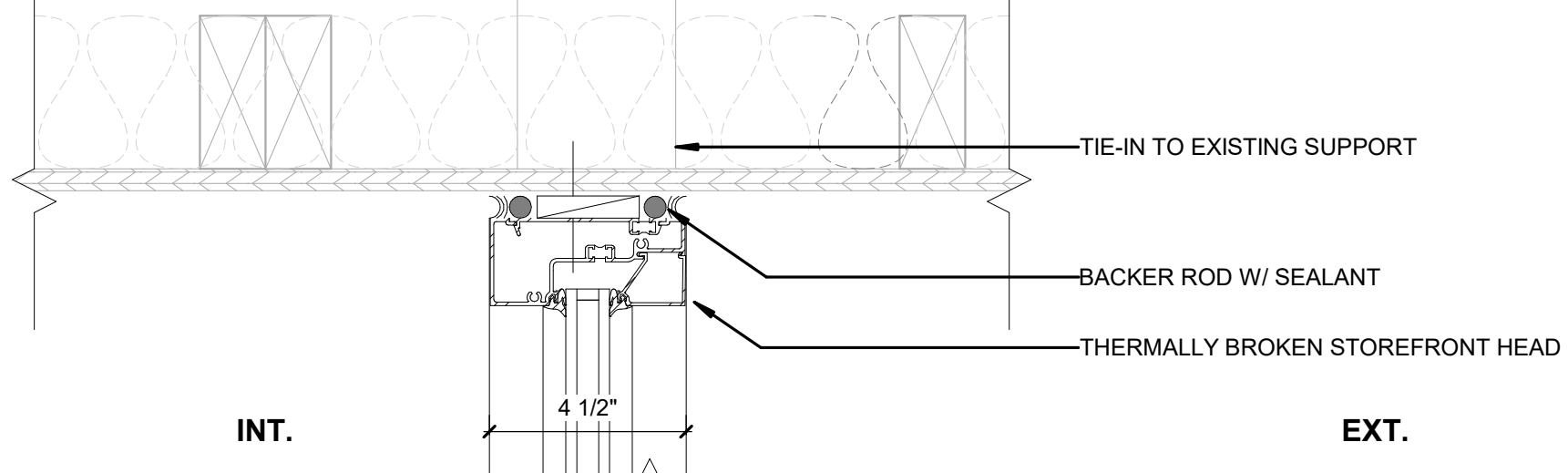
SHEET: A-102

BID DOCUMENTS

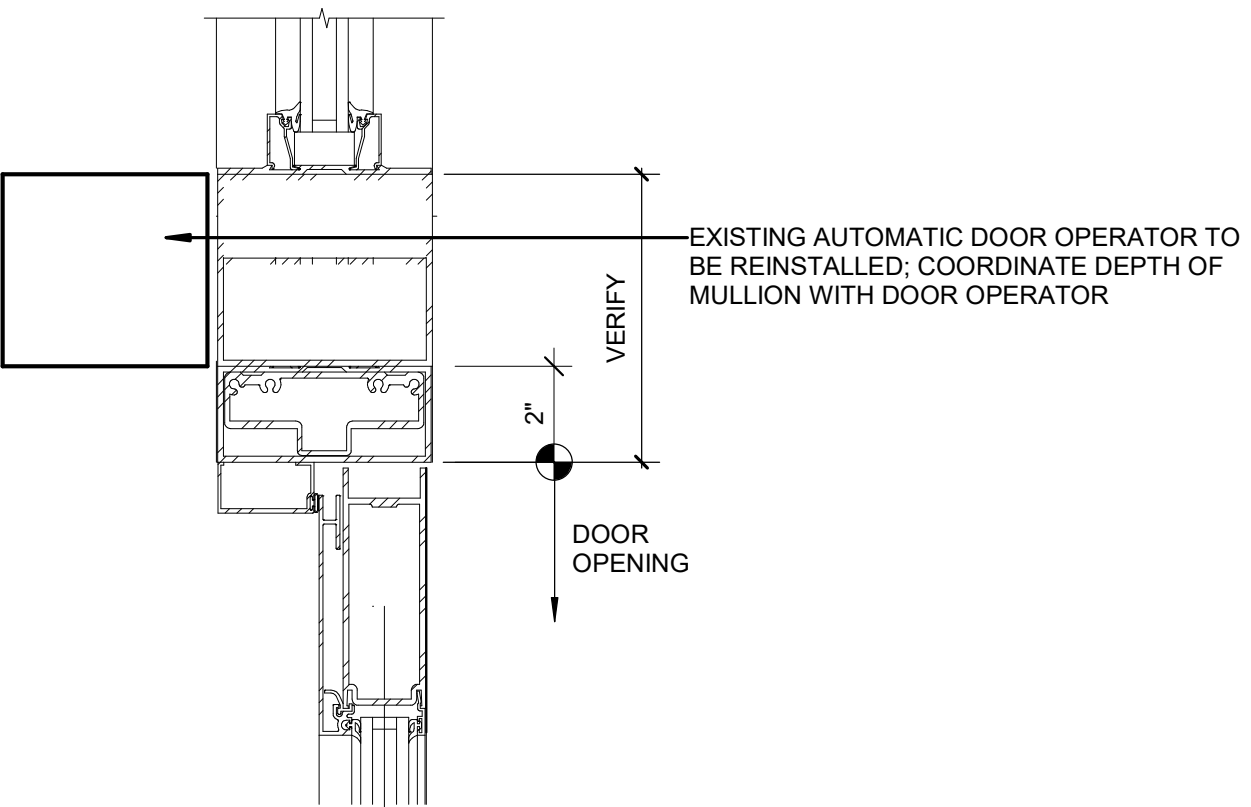
DOOR AND FRAME SCHEDULE

DOOR NUMBER	From Room: Name	PANEL TYPE(S)	DOOR PANELS			DOOR FRAME		DOOR DETAILS		HW SET	Comments
			PANEL WIDTH(S)	HEIGHT	FINISH 1	TYPE	FINISH 1	HEAD	JAMB		
FFE		PNL-O-AL + PNL-O-AL	3'-0" + 3'-0"	8'-0"	AL	FRM-00AL(SF)	AL	H-3	J-2	01	REMOVE + REINSTALL AUTOMATIC DOOR OPERATOR AND ALARM DEVICES
A02	CORRIDOR	PNL-F-FRP	3'-0"	7'-0"	FRP	FRM-00AL1	AL	H-1	J-1	08	4" FRAME AT HEAD, REMOVE + REINSTALL PANIC HARDWARE AND ALARM CARD READER
A03	CORRIDOR	PNL-O-AL	3'-0"	7'-0"	AL	FRM-00AL1	AL	H-2	J-2	07	
B01	PRE-KINDERGARTEN CLASSROOM	PNL-O-AL	3'-0"	7'-0"	AL	FRM-00AL1	AL	H-2	J-2	05	
B02	KINDERGARTEN CLASSROOM	PNL-O-AL	3'-0"	7'-0"	AL	FRM-00AL1	AL	H-2	J-2	05	
B03	KINDERGARTEN CLASSROOM	PNL-O-AL	3'-0"	7'-0"	AL	FRM-00AL1	AL	H-2	J-2	05	
B04	KINDERGARTEN CLASSROOM	PNL-O-AL	3'-0"	7'-0"	AL	FRM-00AL1	AL	H-2	J-2	05	
B05	KINDERGARTEN CLASSROOM	PNL-O-AL	3'-0"	7'-0"	AL	FRM-00AL1	AL	H-2	J-2	05	
B06	KINDERGARTEN CLASSROOM	PNL-O-AL	3'-0"	7'-0"	AL	FRM-00AL1	AL	H-2	J-2	05	
B07	FIRST GRADE CLASSROOM	PNL-O-AL	3'-0"	7'-0"	AL	FRM-00AL1	AL	H-2	J-2	05	
B08	FIRST GRADE CLASSROOM	PNL-O-AL	3'-0"	7'-0"	AL	FRM-00AL1	AL	H-2	J-2	05	
C01	DINING ROOM	PNL-O-AL + PNL-O-AL	3'-0" + 3'-0"	7'-0"	AL	FRM-12AL1	AL	H-1	J-1	03	CARD READER
C01A	DINING ROOM	PNL-O-AL + PNL-O-AL	3'-0" + 3'-0"	7'-0"	AL	FRM-12AL1	AL	H-3	J-2	02	
C01B	DINING ROOM	PNL-O-AL + PNL-O-AL	3'-0" + 3'-0"	7'-0"	AL	FRM-12AL1	AL	H-3	J-2	02	
C01C	DINING ROOM	PNL-O-AL + PNL-O-AL	3'-0" + 3'-0"	7'-0"	AL	FRM-12AL1	AL	H-3	J-2	02	
C02	MECHANICAL	PNL-F-FRP + PNL-F-FRP	3'-0" + 3'-0"	7'-0"	FRP	FRM-02AL1	AL	H-1	J-1	04	
C03	ELECTRICAL	PNL-F-FRP	3'-0"	7'-0"	FRP	FRM-00AL1	AL	H-1	J-1	09	
C04	KITCHEN	PNL-F-FRP	3'-0"	7'-0"	FRP	FRM-00AL1	AL	H-1	J-1	09	
D01	1ST GRADE CLASSROOM	PNL-O-AL	3'-0"	7'-0"	AL	FRM-00AL1	AL	H-2	J-2	05	
D02	1ST GRADE CLASSROOM	PNL-O-AL	3'-0"	7'-0"	AL	FRM-00AL1	AL	H-2	J-2	05	
D03	1ST GRADE CLASSROOM	PNL-O-AL	3'-0"	7'-0"	AL	FRM-00AL1	AL	H-2	J-2	05	
D04	1ST GRADE CLASSROOM	PNL-O-AL	3'-0"	7'-0"	AL	FRM-00AL1	AL	H-2	J-2	05	
D05	2ND GRADE CLASSROOM	PNL-O-AL	3'-0"	7'-0"	AL	FRM-00AL1	AL	H-2	J-2	05	
D06	2ND GRADE CLASSROOM	PNL-O-AL	3'-0"	7'-0"	AL	FRM-00AL1	AL	H-2	J-2	05	
D07	2ND GRADE CLASSROOM	PNL-O-AL	3'-0"	7'-0"	AL	FRM-00AL1	AL	H-2	J-2	05	
D08	2ND GRADE CLASSROOM	PNL-O-AL	3'-0"	7'-0"	AL	FRM-00AL1	AL	H-2	J-2	05	
E01	CORRIDOR	PNL-O-AL + PNL-O-AL	3'-0" + 3'-0"	7'-0"	AL	FRM-02AL1	AL	H-2	J-2	01	CARD READER, REMOVE + REINSTALL AUTOMATIC DOOR OPERATOR AND ALARM DEVICES
E02	4TH GRADE CLASSROOM	PNL-O-AL	3'-0"	7'-0"	AL	FRM-00AL1	AL	H-2	J-2	05	
E03	4TH GRADE CLASSROOM	PNL-O-AL	3'-0"	7'-0"	AL	FRM-00AL1	AL	H-2	J-2	05	
E04	4TH GRADE CLASSROOM	PNL-O-AL	3'-0"	7'-0"	AL	FRM-00AL1	AL	H-2	J-2	05	
E05	4TH GRADE CLASSROOM	PNL-O-AL	3'-0"	7'-0"	AL	FRM-00AL1	AL	H-2	J-2	05	
E06	3RD GRADE CLASSROOM	PNL-O-AL	3'-0"	7'-0"	AL	FRM-00AL1	AL	H-2	J-2	05	
E07	3RD GRADE CLASSROOM	PNL-O-AL	3'-0"	7'-0"	AL	FRM-00AL1	AL	H-2	J-2	05	
E08	3RD GRADE CLASSROOM	PNL-O-AL	3'-0"	7'-0"	AL	FRM-00AL1	AL	H-2	J-2	05	
E09	3RD GRADE CLASSROOM	PNL-O-AL	3'-0"	7'-0"	AL	FRM-00AL1	AL	H-2	J-2	05	
F01	PRE-KINDERGARTEN CLASSROOM	PNL-O-AL	3'-0"	7'-0"	AL	FRM-00AL1	AL	H-2	J-2	05	
F02	MECHANICAL	PNL-F-FRP + PNL-F-FRP	3'-0" + 3'-0"	7'-0"	FRP	FRM-02AL1	AL	H-2	J-2	04	
F03	PRE-KINDERGARTEN CLASSROOM	PNL-O-AL	3'-0"	7'-0"	AL	FRM-00AL1	AL	H-2	J-2	05	
F04	CORRIDOR	PNL-O-AL	3'-0"	7'-0"	AL	FRM-00AL1	AL	H-2	J-2	07	CARD READER
F04A	CORRIDOR	PNL-O-AL	3'-0"	7'-0"	AL	FRM-00AL1	AL	H-2	J-2	07	CARD READER
F04B	CORRIDOR	PNL-O-AL	3'-0"	7'-0"	AL	FRM-00AL1	AL	H-2	J-2	07	CARD READER
G01	CORRIDOR	PNL-O-AL	3'-0"	7'-0"	AL	FRM-30AL1	AL	H-1	J-1	07	CARD READER
G02	CORRIDOR	PNL-O-AL	3'-0"	7'-0"	AL	FRM-30AL1	AL	H-1	J-1	06	
G03	5TH GRADE CLASSROOM	PNL-O-AL	3'-0"	7'-0"	AL	FRM-10AL1	AL	H-3	J-2	05	
G04	5TH GRADE CLASSROOM	PNL-O-AL	3'-0"	7'-0"	AL	FRM-10AL1	AL	H-3	J-2	05	
G05	5TH GRADE CLASSROOM	PNL-O-AL	3'-0"	7'-0"	AL	FRM-10AL1	AL	H-3	J-2	05	
G06	5TH GRADE CLASSROOM	PNL-O-AL	3'-0"	7'-0"	AL	FRM-10AL1	AL	H-3	J-2	05	
G07	4TH GRADE CLASSROOM	PNL-O-AL	3'-0"	7'-0"	AL	FRM-10AL1	AL	H-3	J-2	05	
G08	4TH GRADE CLASSROOM	PNL-O-AL	3'-0"	7'-0"	AL	FRM-10AL1	AL	H-3	J-2	05	
G09	4TH GRADE CLASSROOM	PNL-O-AL	3'-0"	7'-0"	AL	FRM-10AL1	AL	H-3	J-2	05	
G10	4TH GRADE CLASSROOM	PNL-O-AL	3'-0"	7'-0"	AL	FRM-10AL1	AL	H-3	J-2	05	

ELECTRONIC CARD READER NOTES: (SEE A-102)

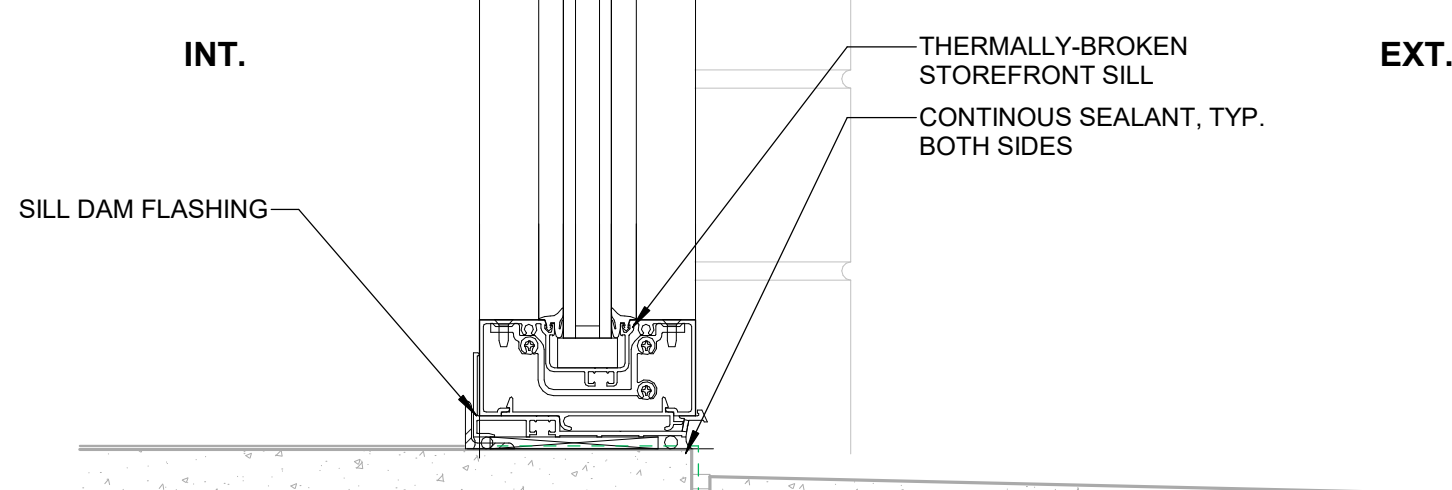


H-3 ALUMINUM STOREFRONT HEAD - EXT ENTRANCE



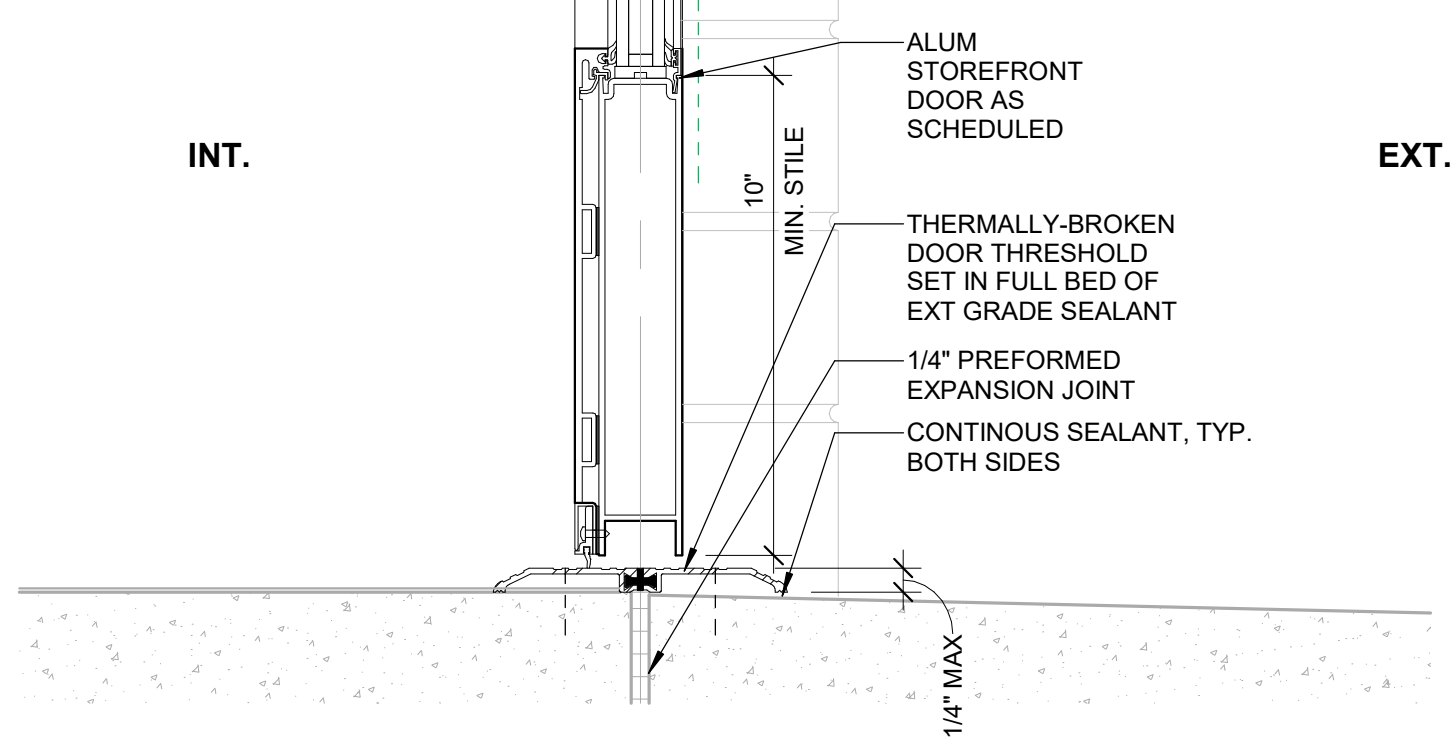
C1 ALUMINUM STOREFRONT - EXT ENTRANCE HEAD

3" = 1'-0"



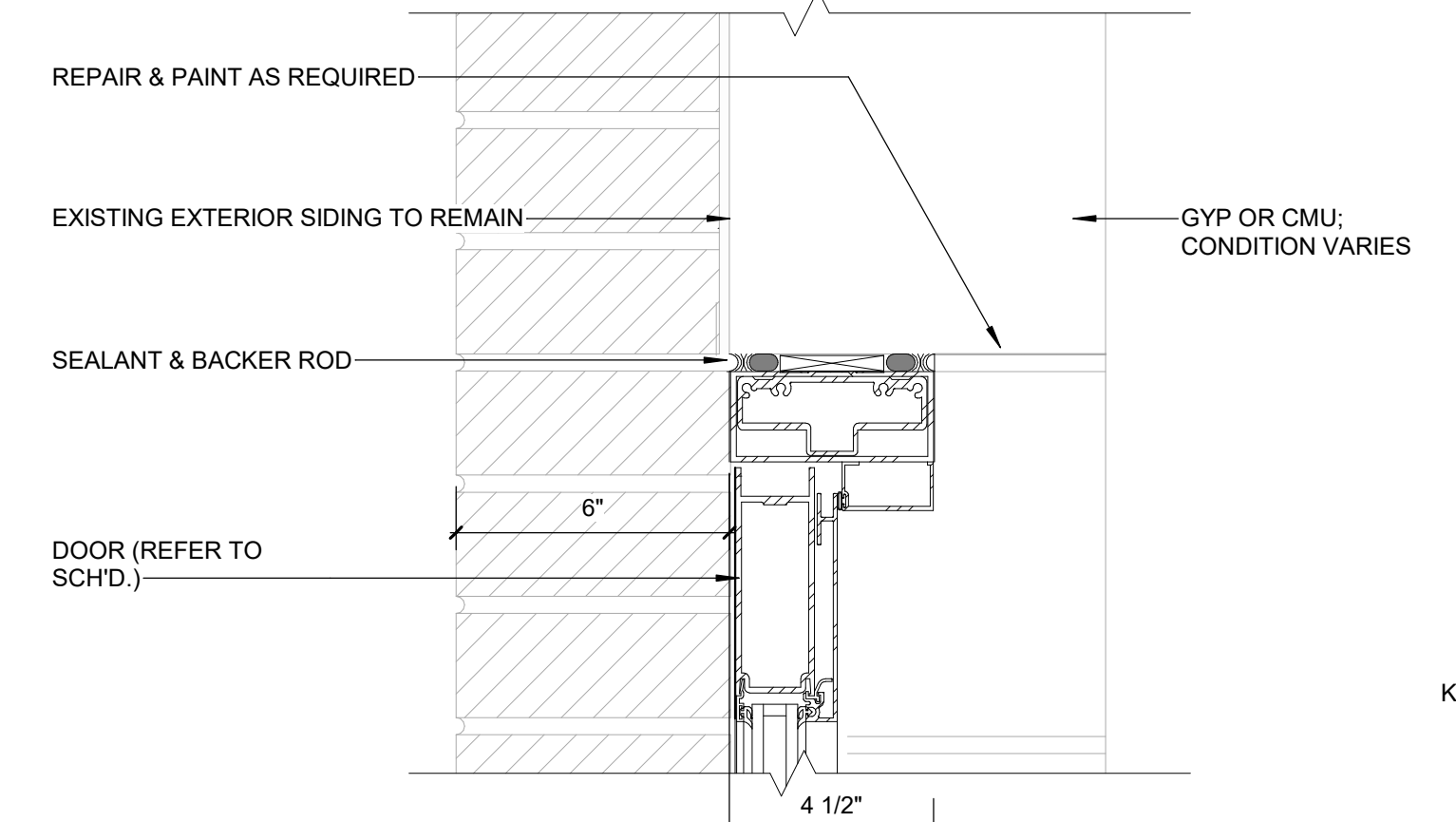
B1 ALUMINUM STOREFRONT - SILL AT GRADE

3" = 1'-0"



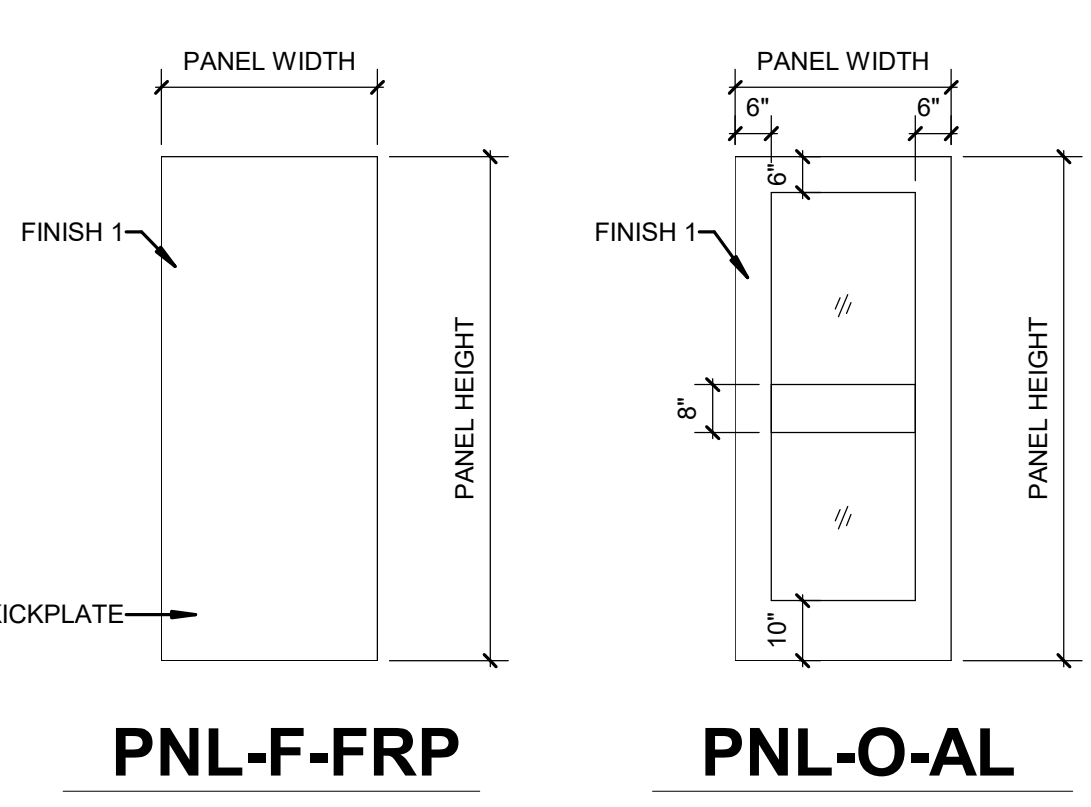
A1 ALUMINUM STOREFRONT - EXT ENTRANCE SILL

3" = 1'-0"



H-2 AL STOREFRONT - EXT. HEAD - SIDING

DOOR TYPES

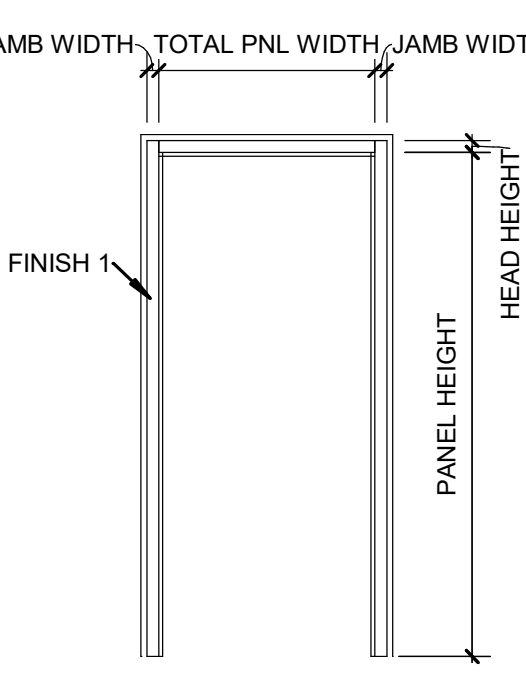
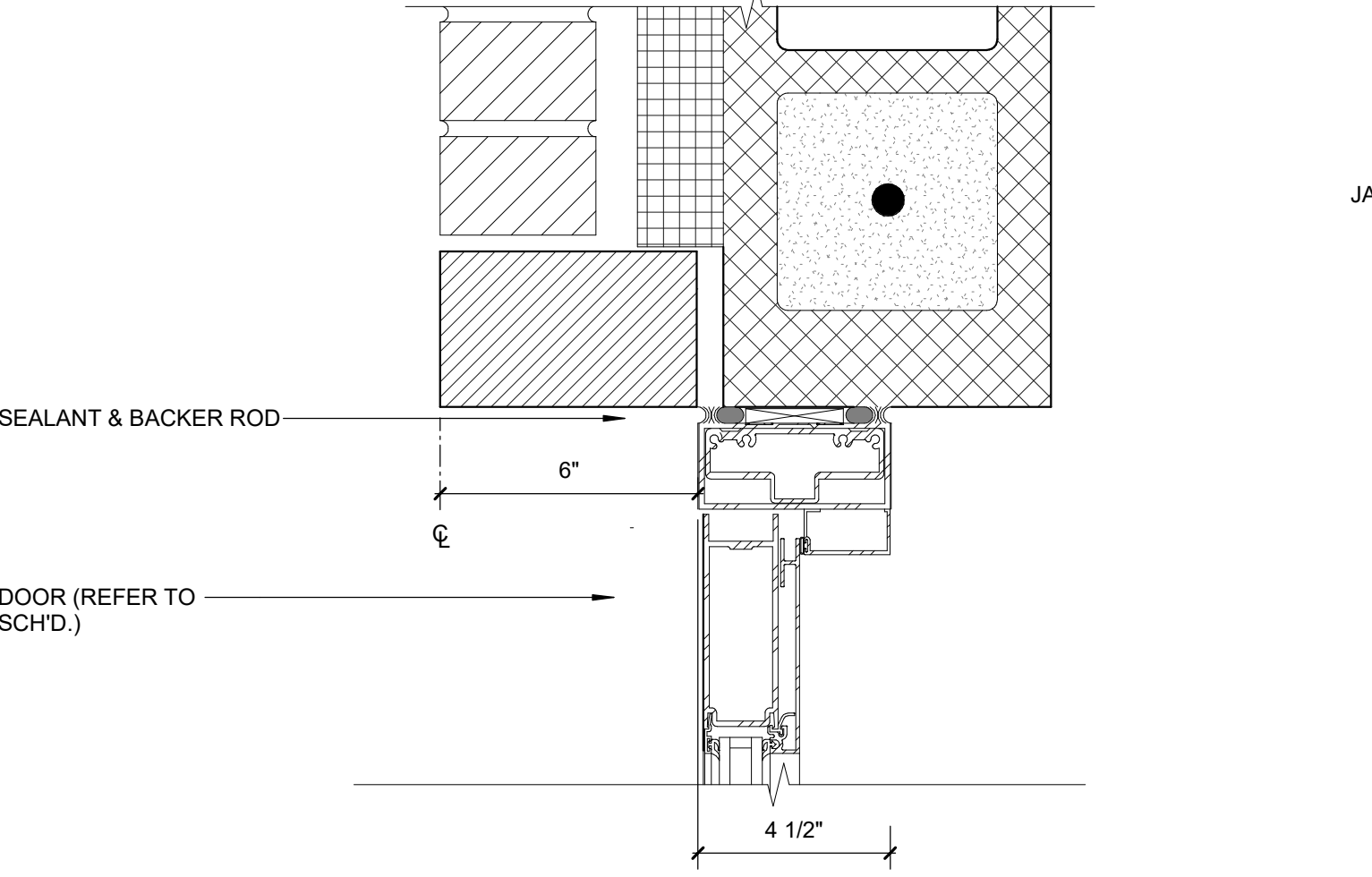


PNL-F-FRP

PNL-O-AL

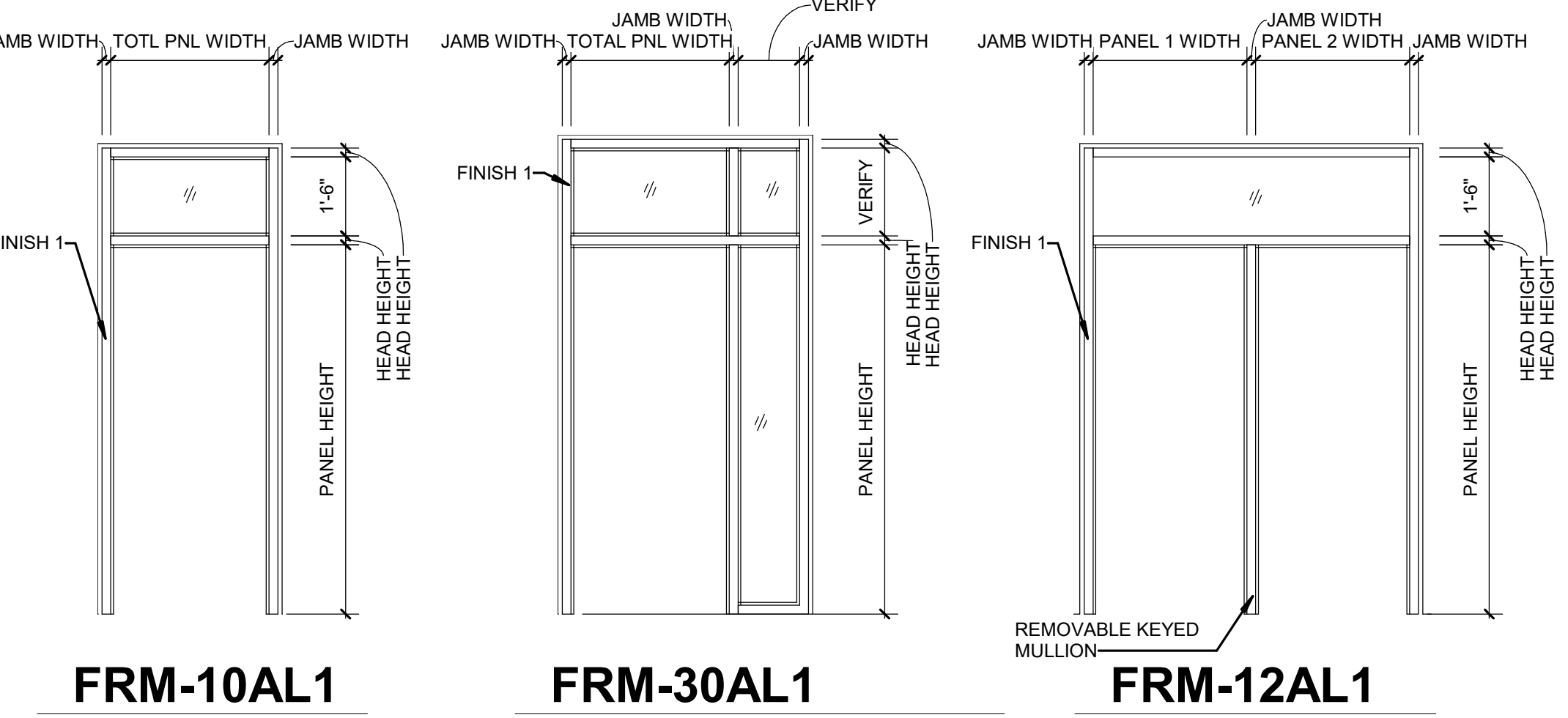
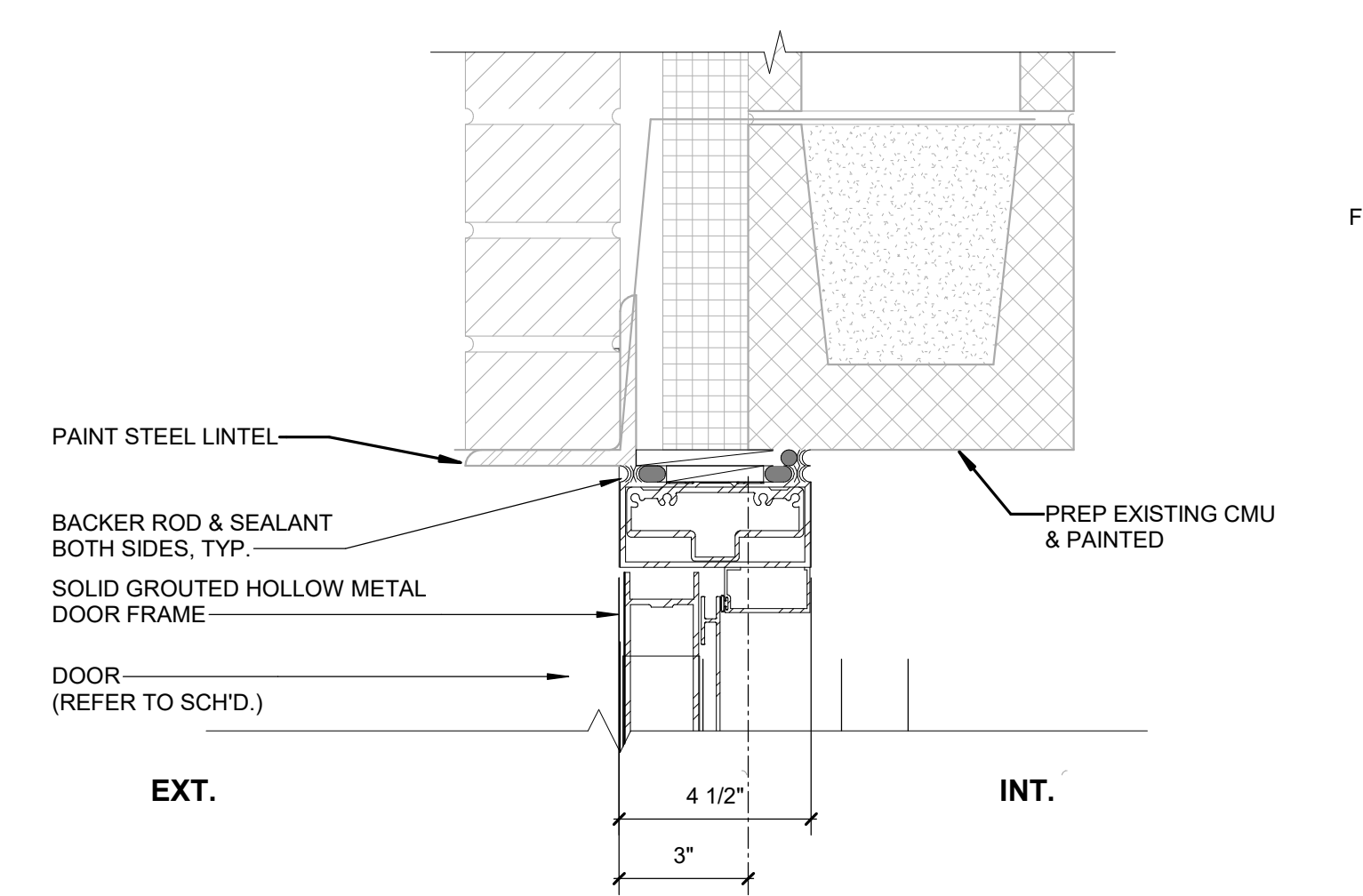
FRAME TYPES

CONFIRM LOCATIONS WITH 4" HEAD



FRM-00AL1

J-2 AL STOREFRONT - EXT. JAMB - MASONRY

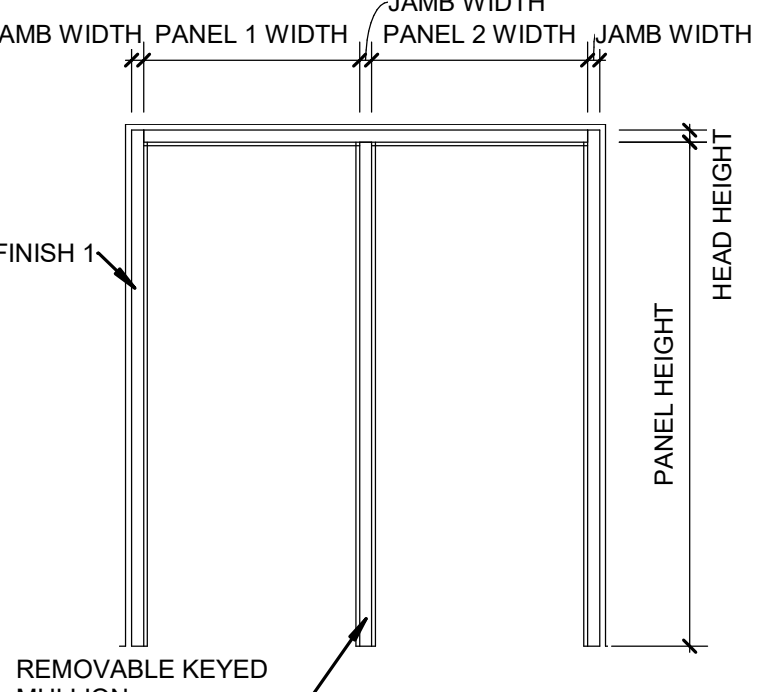
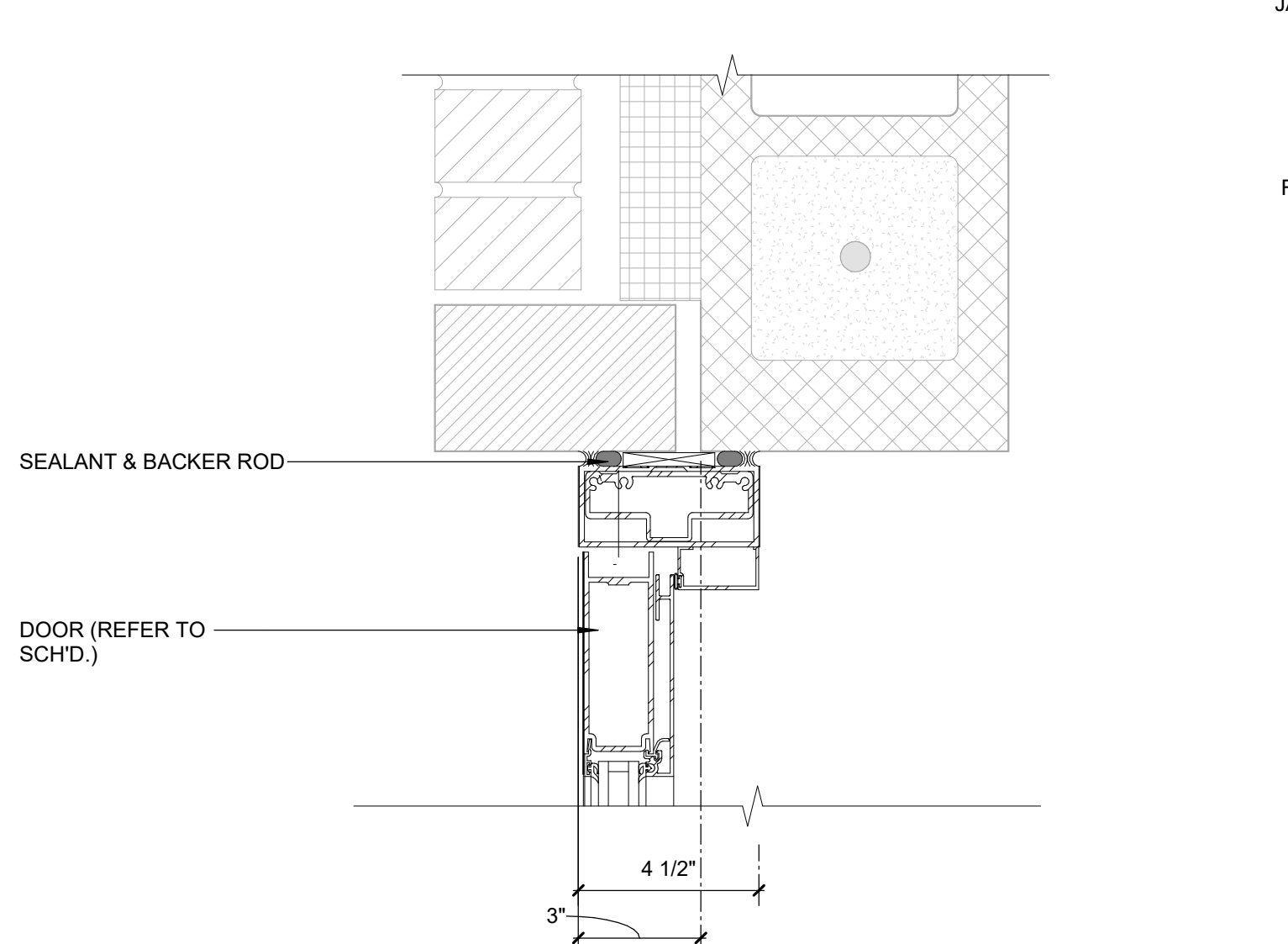


FRM-10AL1

FRM-30AL1

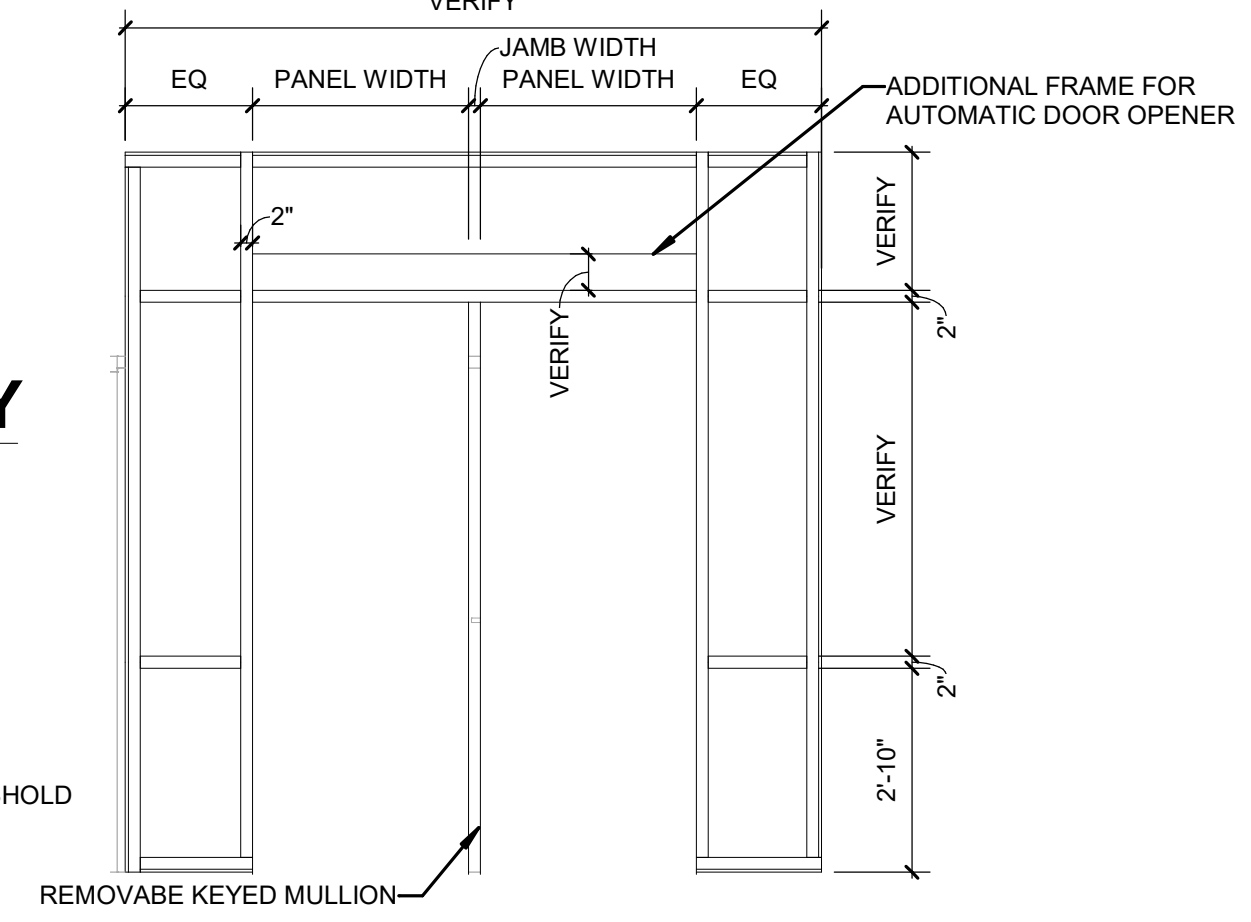
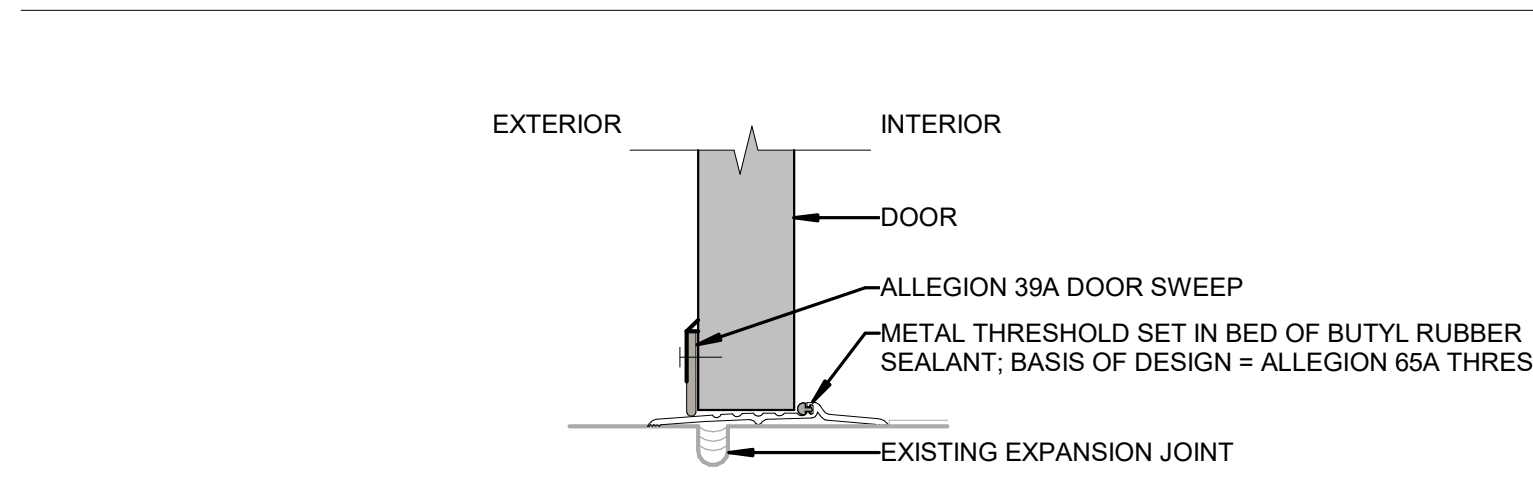
FRM-12AL1

H-1 STOREFRONT - EXT HEAD - MASONRY



FRM-02AL1

J-1 AL STOREFRONT - EXT. JAMB - MASONRY



FRM 00AL (SF)

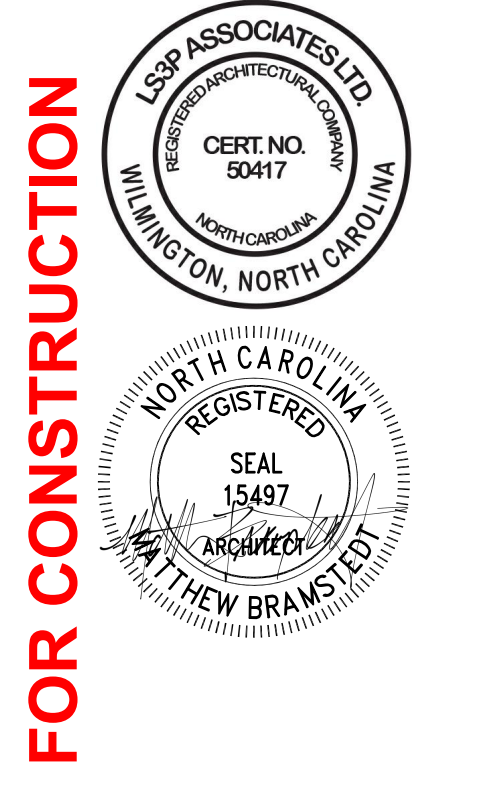
TYP THRESHOLD DETAIL



Brunswick County Schools



101 NORTH THIRD STREET, SUITE 500
WILMINGTON, NORTH CAROLINA 28401
TEL. 910.790.9901 FAX. 910.790.3111
WWW.LS3P.COM



FOR CONSTRUCTION

Southport Elementary School Window & Door Replacement
701 W. 9th Street Southport, NC 28461
LS3P PROJECT: 7201-218690

DATE	DESCRIPTION
A 10/24/2022	BID DOCUMENTS
B 11/08/2022	ADDENDUM 002

SHEET NAME: DOOR SCHEDULE & DETAILS

ORIG SUBMISSION: 10/24/22

SHEET: A-103

BID DOCUMENTS

THE LINE SHOWN ABOVE IS EXACTLY ONE FOOT ABOVE FINISH FLOOR LEVEL

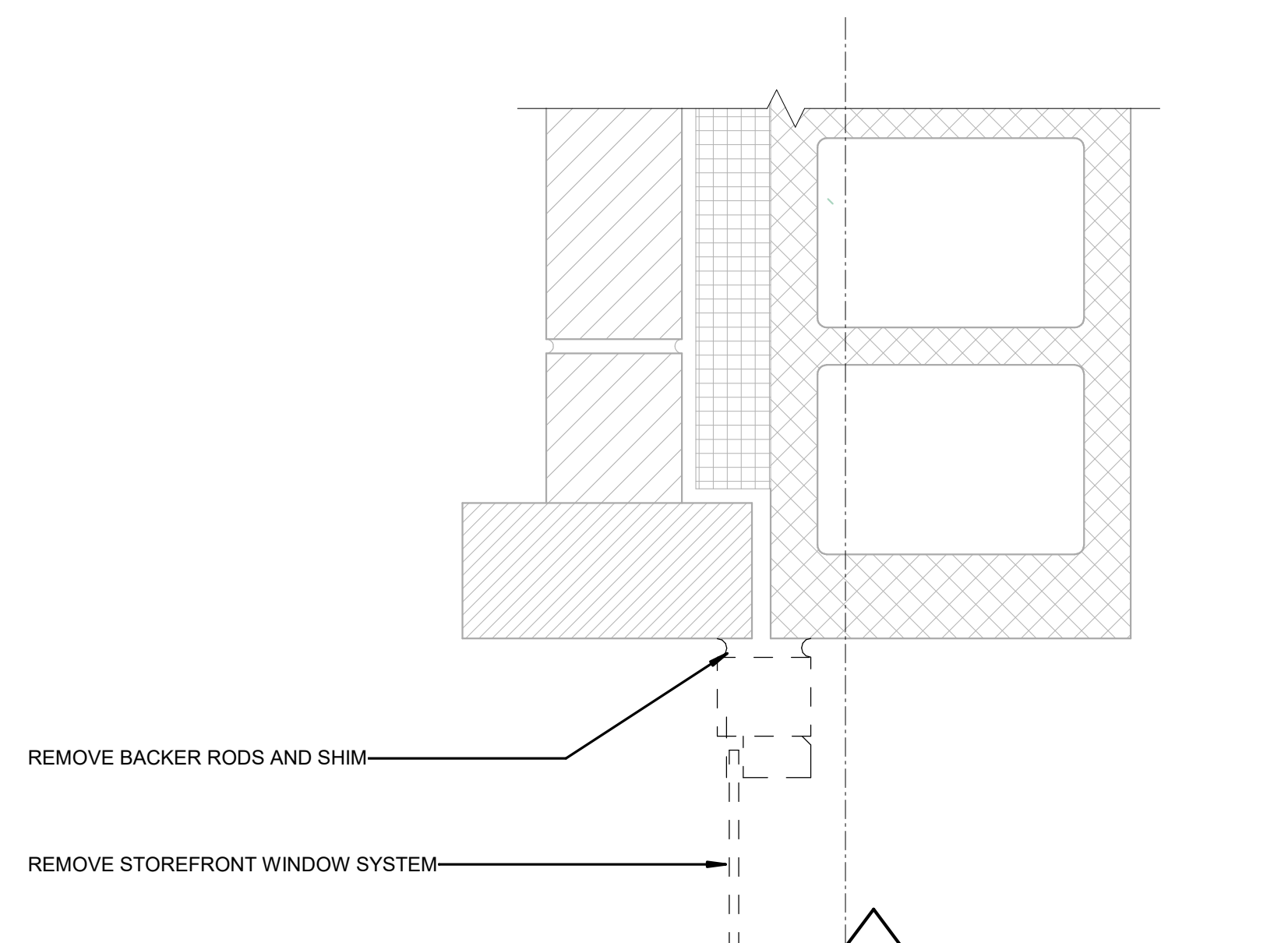
E

D

C

B

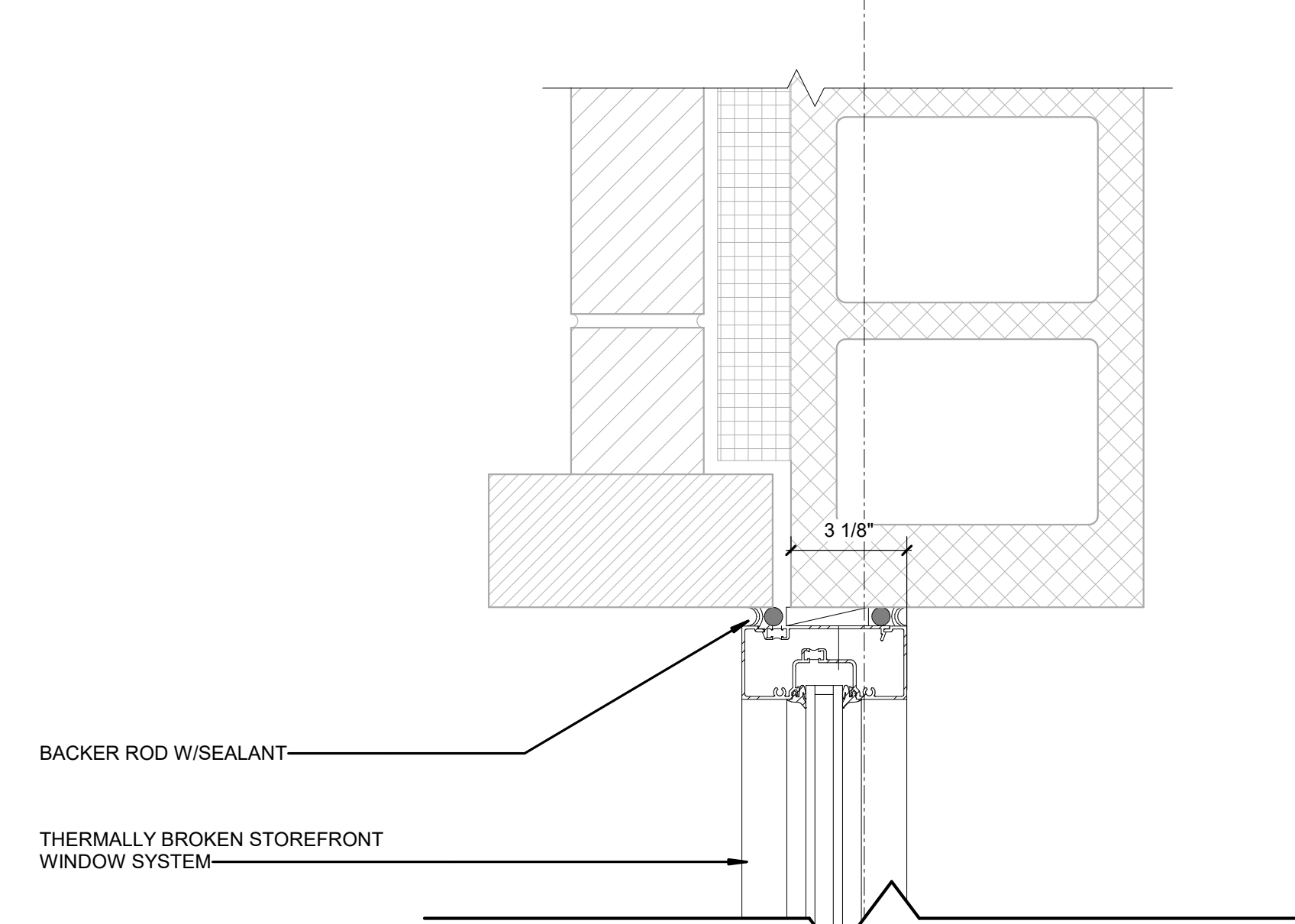
A



JAMB

HEAD

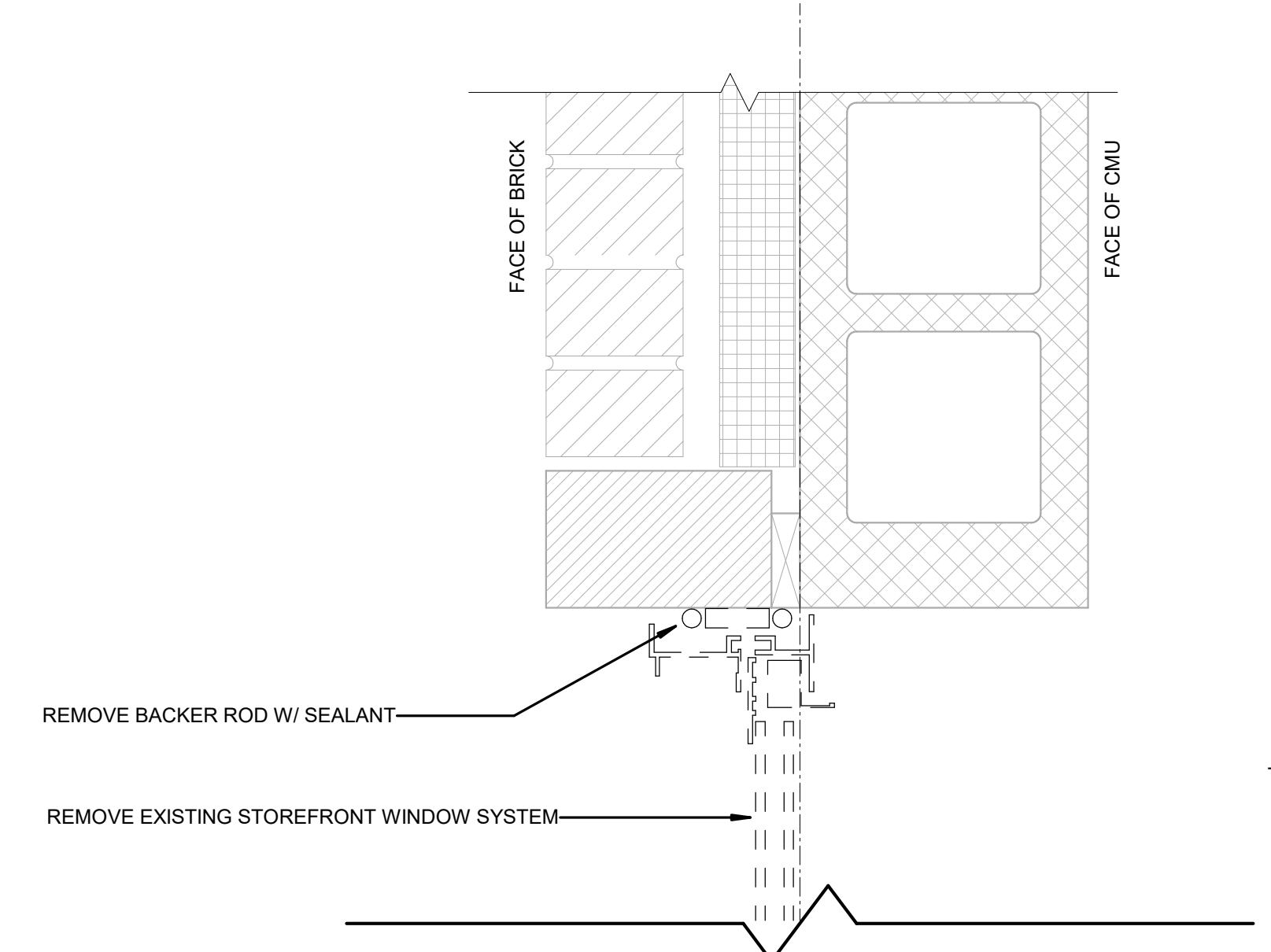
A1 TYP. DEMO - WINDOW HEAD, JAMB & SILL
3" = 1'-0"



JAMB

HEAD

A2 TYP. NEW - WINDOW HEAD, JAMB & SILL
3" = 1'-0"

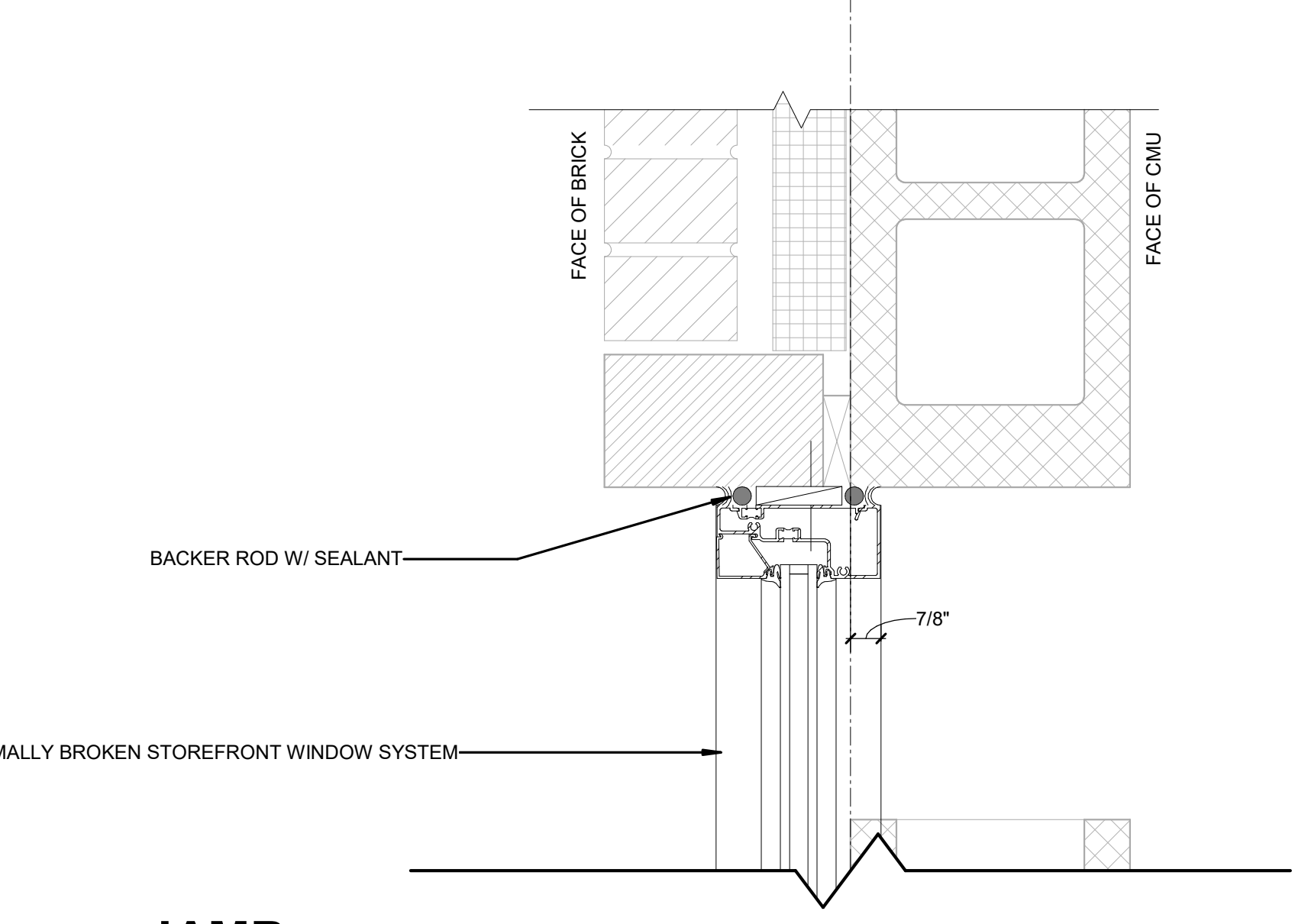


JAMB

HEAD

A4 TYP. DEMO. - WINDOW HEAD, JAMB & SILL
3" = 1'-0"

SEE NOTE ON FLOOR PLAN OF SHEET A-101 FOR WINDOWS WITH THIS CONDITION

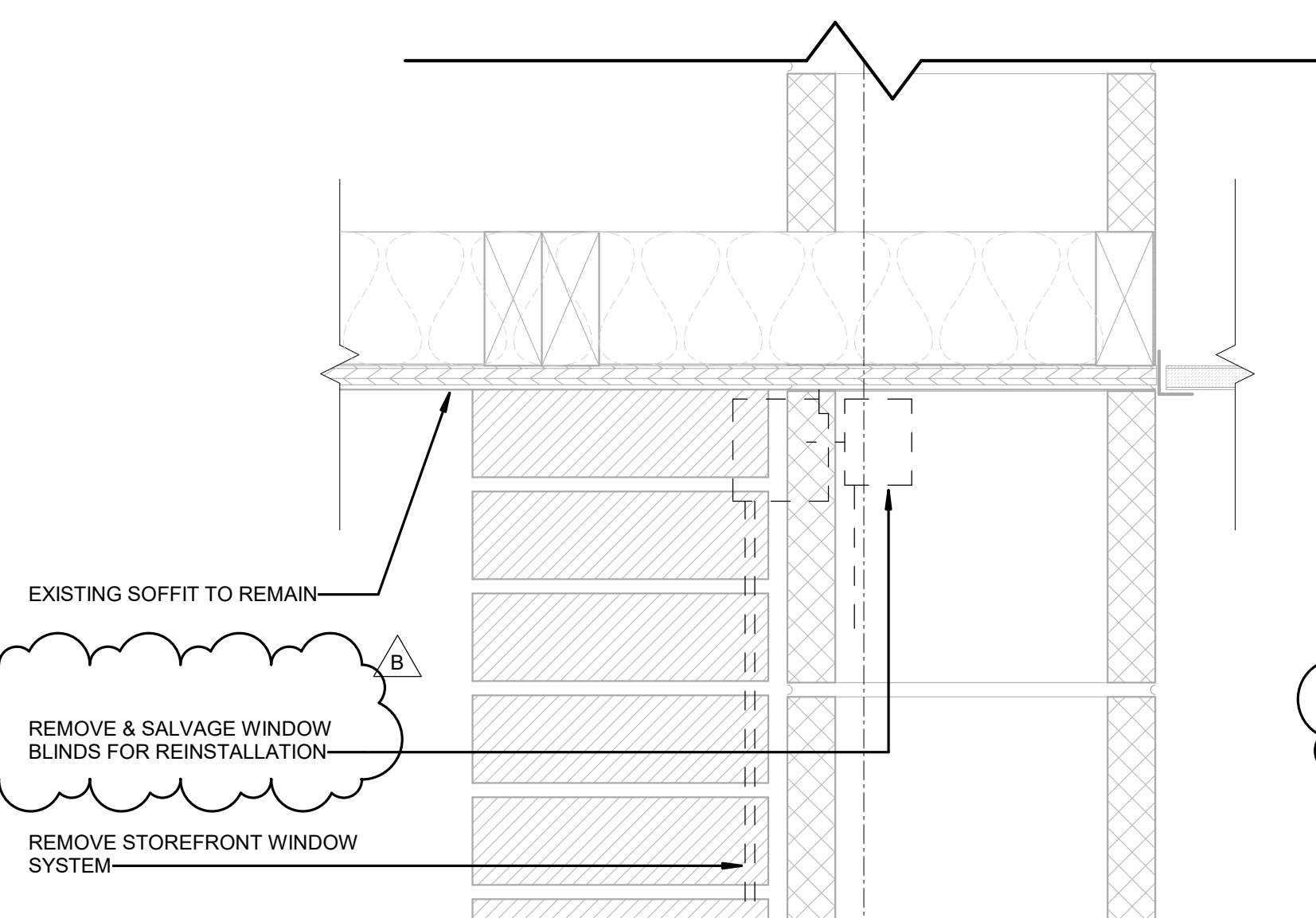


JAMB

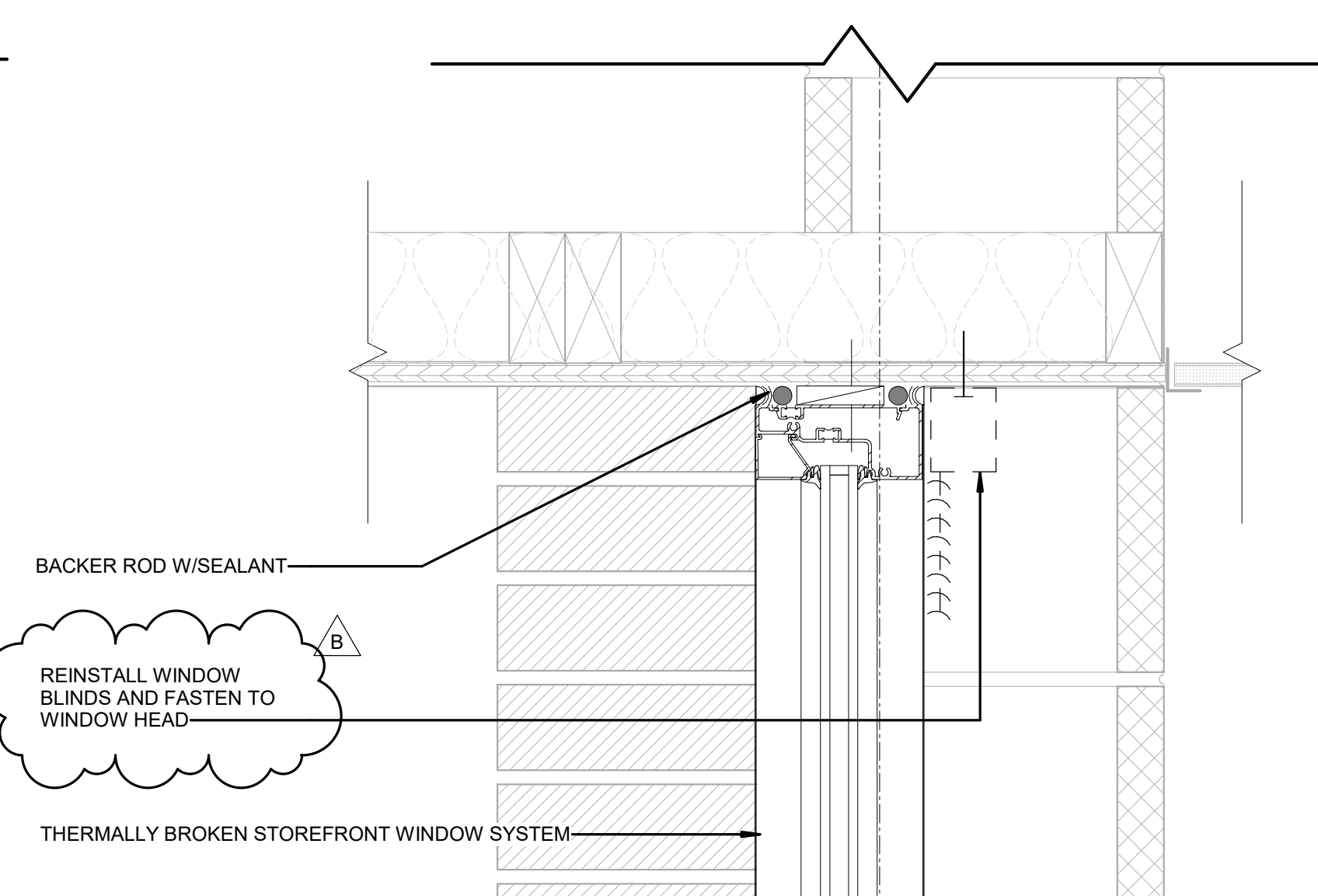
HEAD

A5 TYP. NEW - WINDOW HEAD, JAMB & SILL
3" = 1'-0"

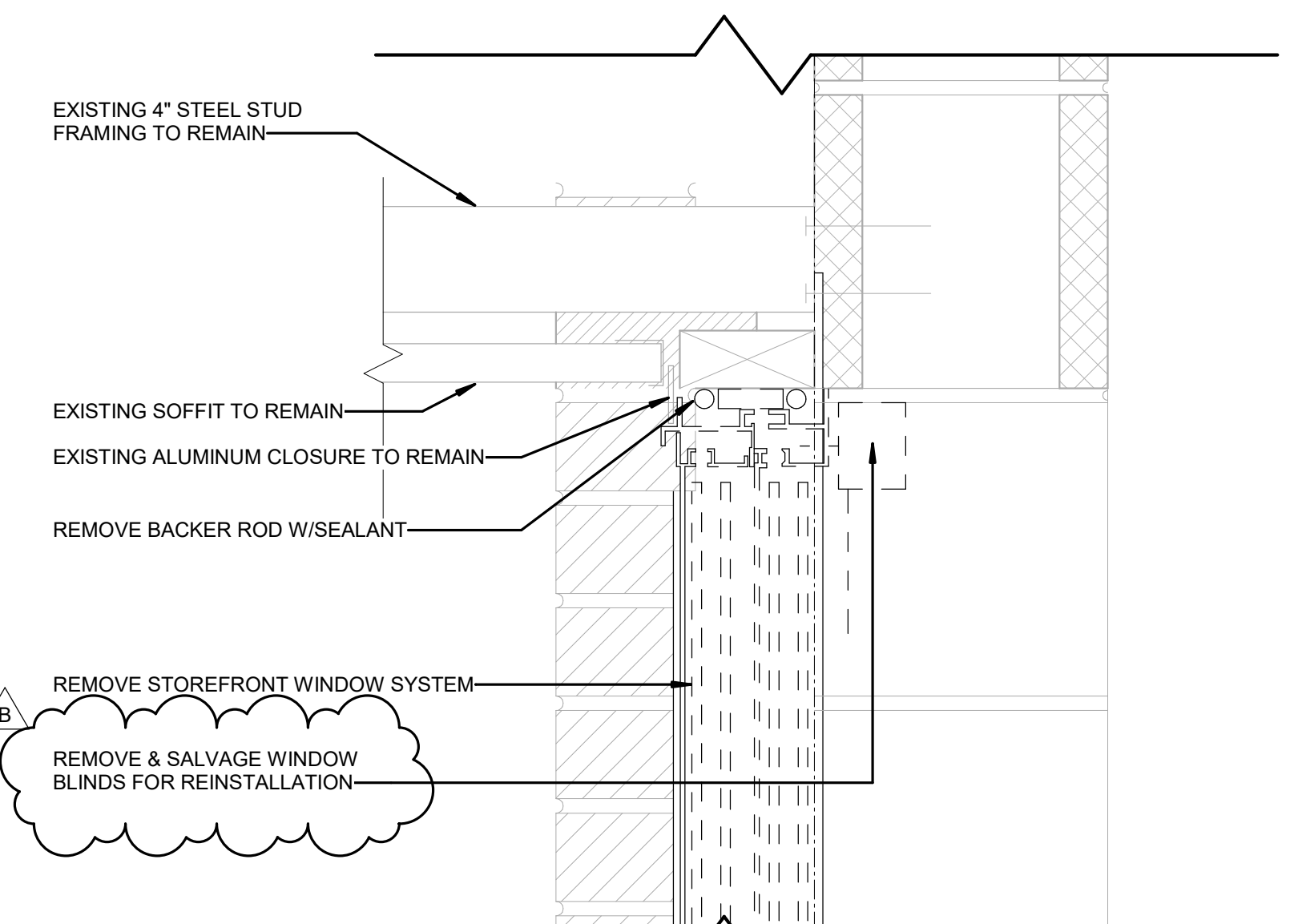
SEE NOTE ON FLOOR PLAN OF SHEET A-101 FOR WINDOWS WITH THIS CONDITION



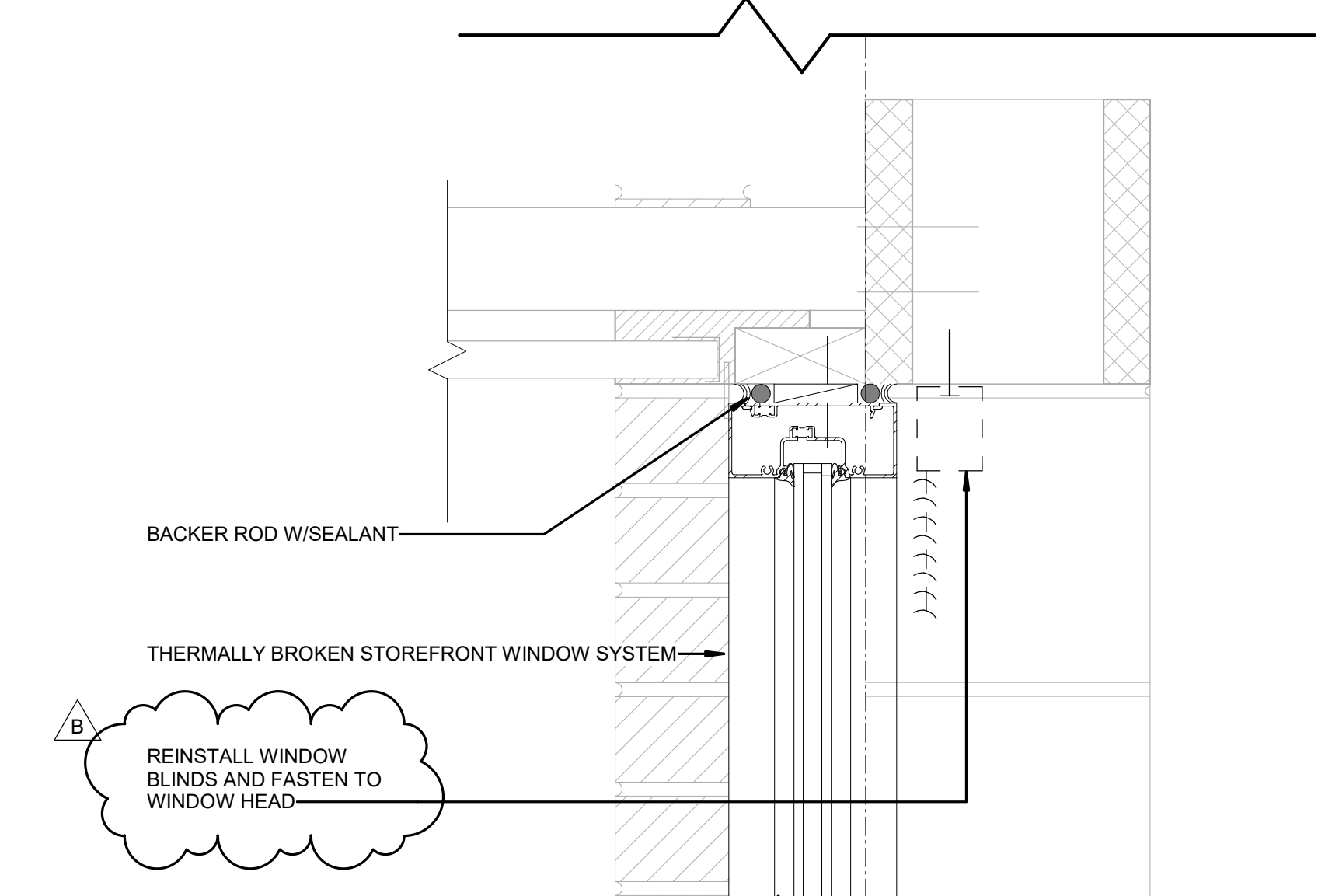
HEAD



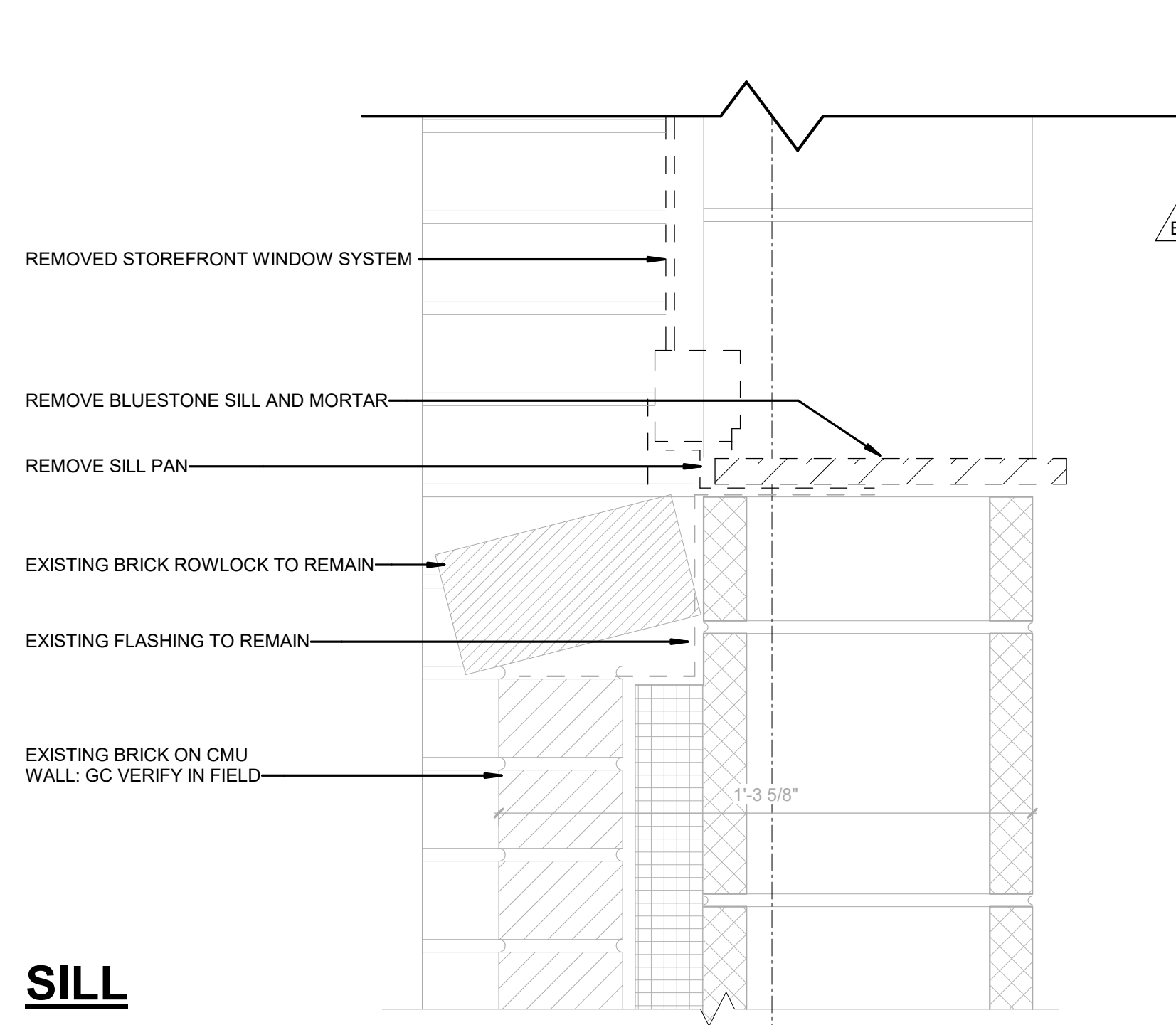
HEAD



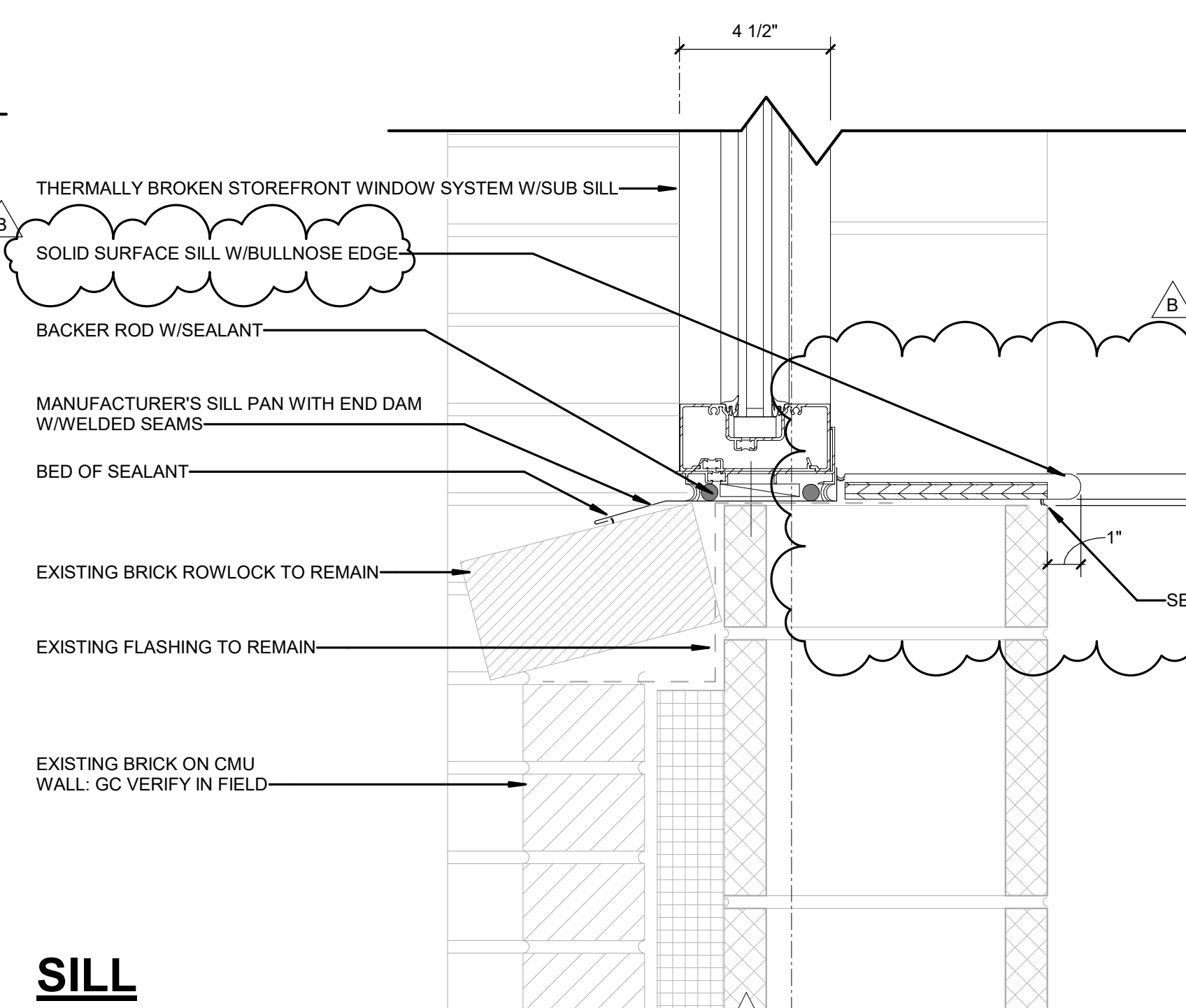
HEAD



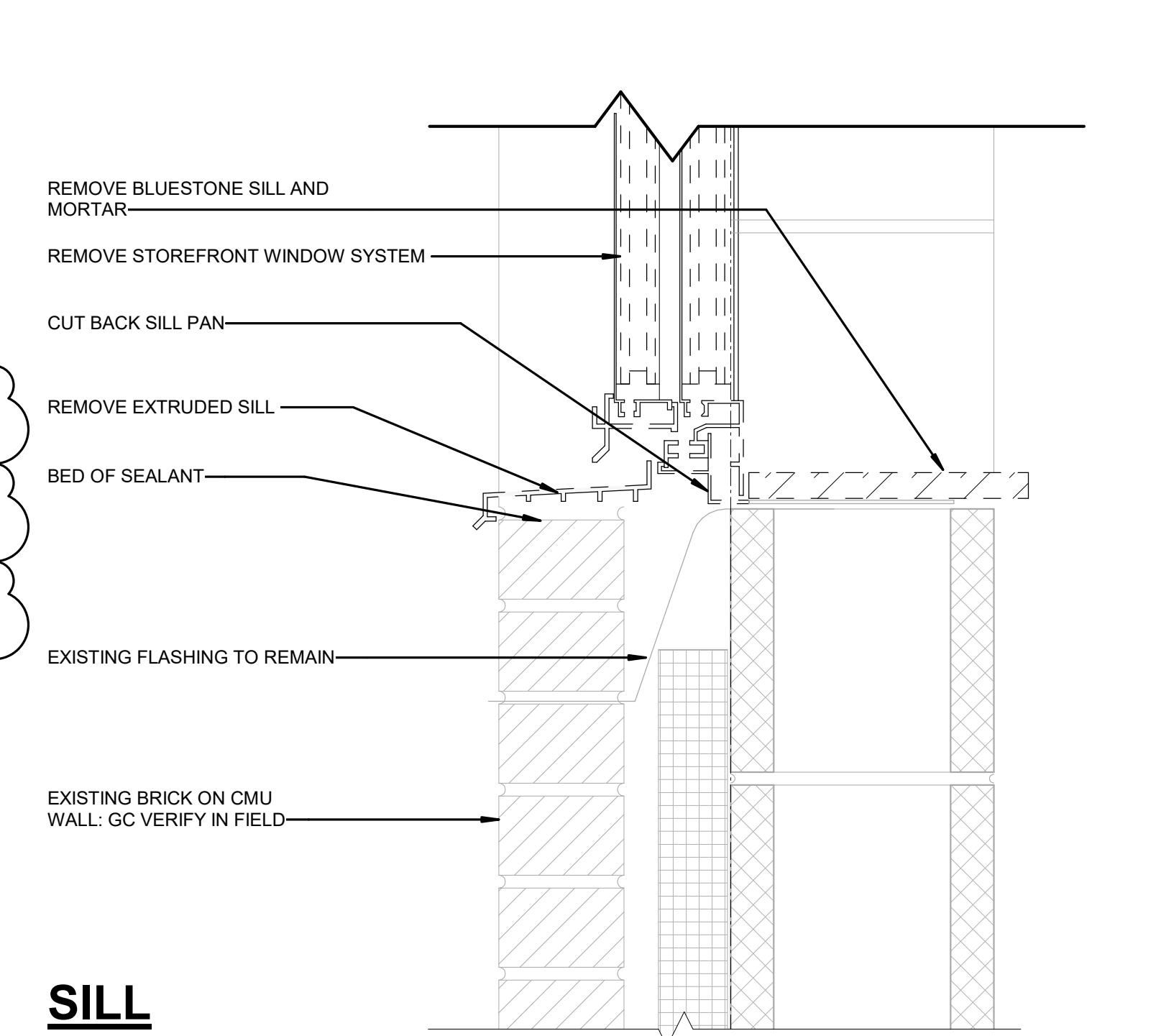
HEAD



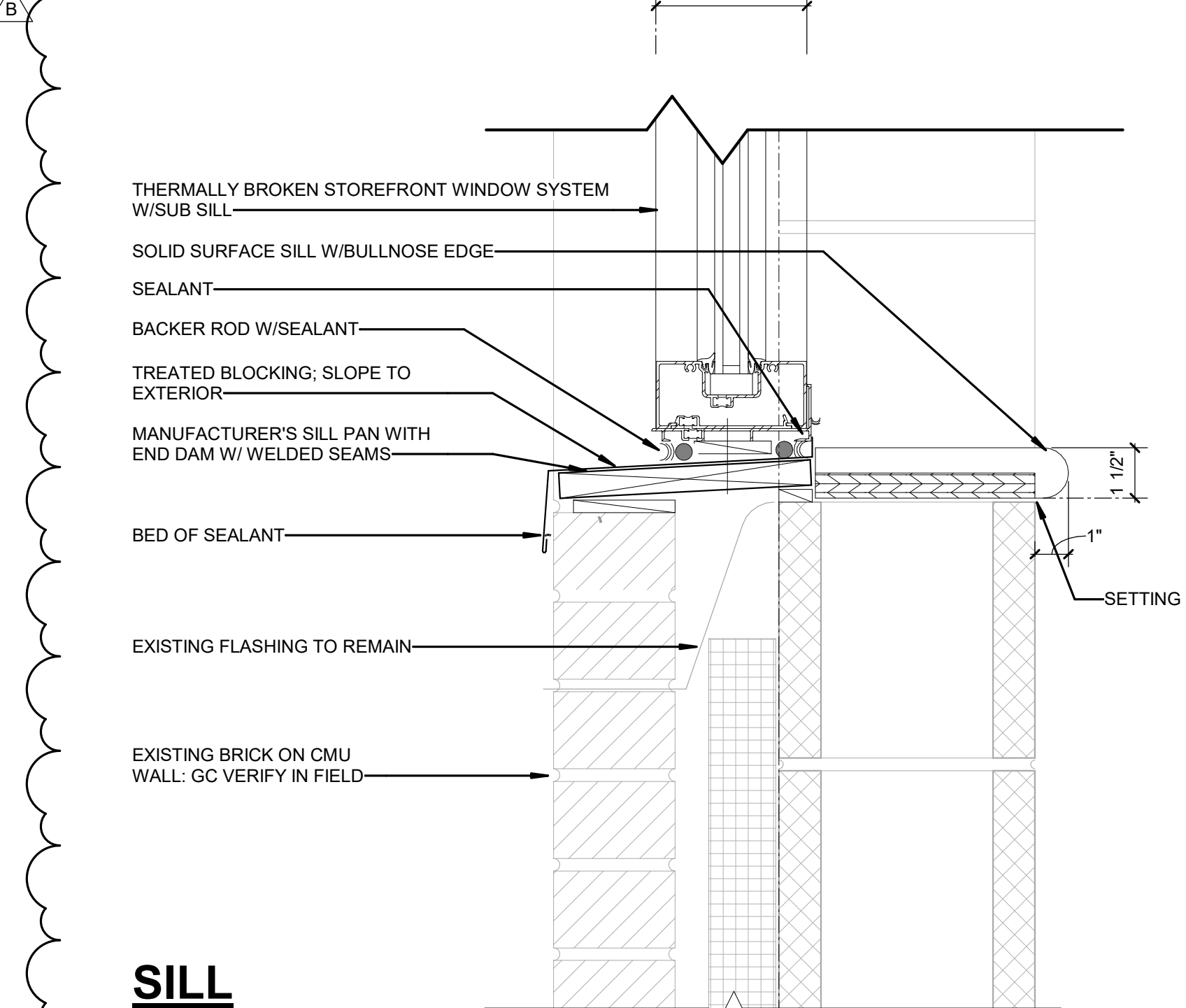
SILL



SILL



SILL



SILL



Brunswick County Schools



101 NORTH THIRD STREET, SUITE 500
WILMINGTON, NORTH CAROLINA 28401
TEL. 910.790.9901 FAX. 910.790.3111
WWW.LS3P.COM



FOR CONSTRUCTION

COPYRIGHT 2022 ALL RIGHTS RESERVED. PRINTED OR ELECTRONIC DRAWINGS AND DOCUMENTATION MAY NOT BE REPRODUCED IN ANY FORM WITHOUT WRITTEN PERMISSION FROM LS3P ASSOCIATES LTD.

Southport Elementary School Window & Door Replacement

701 W. 9th Street Southport, NC 28461
LS3P PROJECT: 7201-218890

A	DATE	DESCRIPTION
A	10/24/2022	BID DOCUMENTS
B	11/08/2022	ADDENDUM 002

SHEET NAME:
WINDOW HEAD,
JAMB & SILL
DETAILS

ORIG SUBMISSION: 10/24/22

SHEET:
A-104

BID DOCUMENTS

11/17/2022 7:21:34 PM

1

2

3

4

5

6

